



Benham & Reeves

## **Sovereign Court, Hammersmith, W6**

£762 per week, £3,300 per month + fees

 2 Bedrooms    2 Bathrooms    Furnished

Spacious luxury 4th floor apartment, with good amenities, situated Hammersmith, one of West London's best-connected locations. Conveniently positioned two minutes' walk from two Underground stations (Central, Piccadilly, Hammersmith & City Lines) that make Hammersmith such a strategic transport hub.

Please [click here](#) for full detail

## Property features

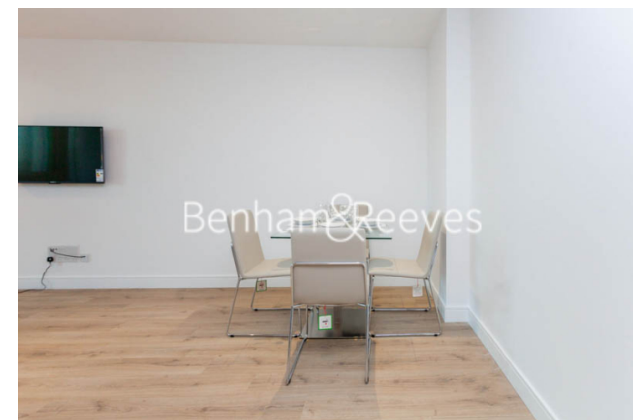
**2 Bedrooms | 2 Bathrooms | Reception | Furnished | Fitted Kitchen | EPC-B | 24 Hours Concierge Service | Private Balcony And Communal Gardens. | Nearby Hammersmith Tube Station.**

For more information about this property,  
please call our Hammersmith branch on

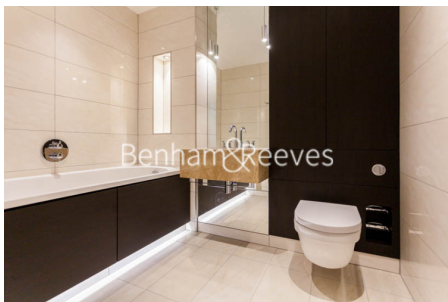
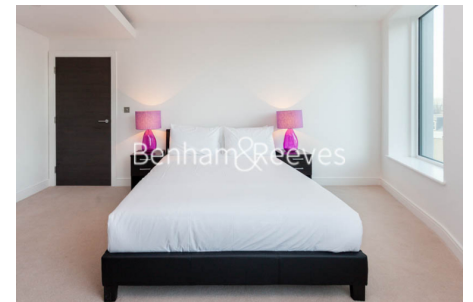
**020 8600 0960**

Redress & Client Money Protection :

Benham and Reeves are members of The Property Ombudsman redress scheme and have Client Money protection with ARLA Propertymark. You can find more information on our website at <https://www.benhamandreeves.com/membership/>



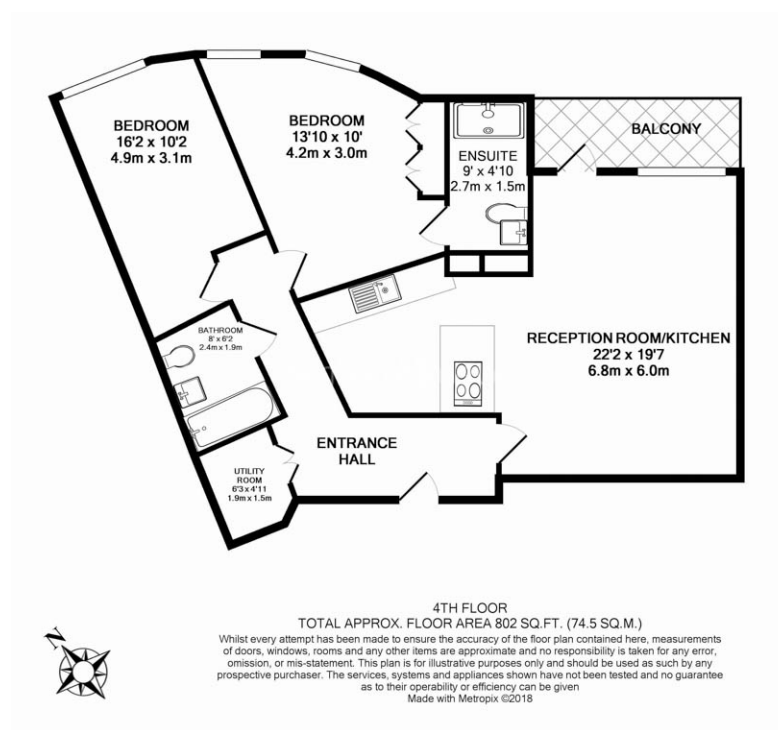
**Benham & Reeves**



# Sovereign Court, Hammersmith, W6

£762 per week, £3,300 per month + fees

[www.benhams.com](http://www.benhams.com)



Score	Energy rating	Current	Potential
92-100	A		
81-91	B	86   B	86   B
69-80	C		
55-68	D		
39-54	E		
21-38	F		
1-20	G		

## London branches open six days a week Mon - Sat

Canary Wharf | City | Colindale | Dartmouth Park | Ealing | Fulham  
Hammersmith | Hampstead | Highgate | Hyde Park | Kensington | Kew  
Knightsbridge | Nine Elms | Shoreditch | Southall | Surrey Quays  
Wapping | Wembley | White City | Woolwich

## International offices

China | Hong Kong SAR | India | Indonesia | Qatar | Malaysia | Middle East | Pakistan  
Singapore | South Africa | Thailand | Turkey



Benham & Reeves