



Benham & Reeves

Matcham House, Hammersmith, W6

£854 per week, £3,700 per month + fees

 2 Bedrooms  2 Bathrooms  Furnished

A spacious, luxury, air-conditioned 1st floor apartment with large private terrace is situated in a prestigious development in Hammersmith. The property is ideally located within walking distance to Hammersmith Underground Station.

Please [click here](#) for full detail

Property features

2 Double Bedroom Apartment with Built-in Wardrobe | Fully Fitted Kitchen Integrated with Well-Known Appliances | Utility Room / Long Hallway | Air Ventilation / Underfloor Heating / Air Conditioning | 24 Hr Concierge / 24 Hr Security / Communal Gardens | EPC-C | Double Reception Room with Dining Area | Luxurious 2 x Bathrooms | Quality Furnished / LED Spotlights / Sizable Private Balcony | Nearby Hammersmith Stations

For more information about this property, please call our Hammersmith branch on

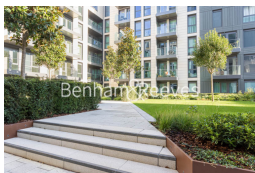
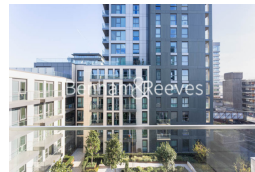
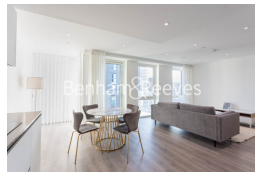
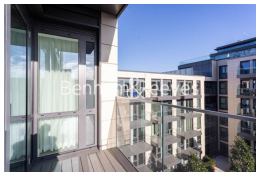
020 8600 0960

Redress & Client Money Protection :

Benham and Reeves are members of The Property Ombudsman redress scheme and have Client Money protection with ARLA Propertymark. You can find more information on our website at <https://www.benham.com/membership/>



Benham & Reeves



Matcham House, Hammersmith, W6

£854 per week, £3,700 per month + fees

www.benhams.com

Score	Energy rating	Current	Potential
92+	A		
81-91	B		
69-80	C	80 c	80 c
55-68	D		
39-54	E		
21-38	F		
1-20	G		

London branches open six days a week Mon - Sat

Canary Wharf | City | Colindale | Dartmouth Park | Ealing | Fulham
 Hammersmith | Hampstead | Highgate | Hyde Park | Kensington | Kew
 Knightsbridge | Nine Elms | Shoreditch | Southall | Surrey Quays
 Wapping | Wembley | White City | Woolwich

International offices

China | Hong Kong SAR | India | Indonesia | Qatar | Malaysia | Middle East | Pakistan
 Singapore | South Africa | Thailand | Turkey

