



Benham & Reeves

Bolander Grove, Hammersmith, SW6

£700 per week, £3,033 per month + fees

 1 Bedroom  1 Bathroom  Furnished

A beautifully designed one-bedroom apartment situated in a unique development, originally a Victorian hotel. This stylish residence features high-quality fixtures and finishes throughout. Residents can enjoy exclusive on-site amenities, including a fully equipped gym, a clubhouse, and a juice bar. Conveniently located near Earl's Court Underground station, the property offers excellent transport links and a vibrant neighborhood.

Please [click here](#) for full detail

Property features

One bedroom | Private balcony | Access to gym and swimming pool | 0.1 mi to west brompton station | 545 sq. Ft | EPC- TBC | furnished | concierge service | close transports links

For more information about this property, please call our Kensington branch on

020 7938 3522

Redress & Client Money Protection :

Benham and Reeves are members of The Property Ombudsman redress scheme and have Client Money protection with ARLA Propertymark. You can find more information on our website at <https://www.benhams.com/membership/>



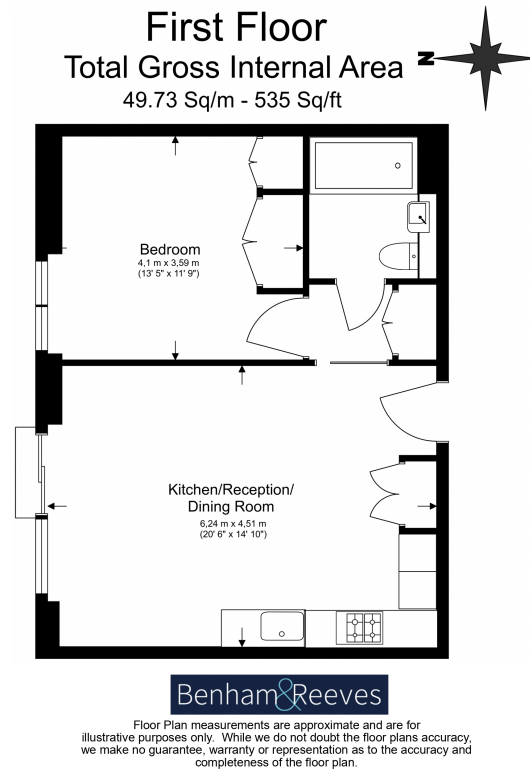
Benham & Reeves



Bolander Grove, Hammersmith, SW6

£700 per week, £3,033 per month + fees

www.benhams.com



London branches open six days a week Mon - Sat

Canary Wharf | City | Colindale | Dartmouth Park | Ealing | Fulham
Hammersmith | Hampstead | Highgate | Hyde Park | Kensington | Kew
Knightsbridge | Nine Elms | Shoreditch | Southall | Surrey Quays
Wapping | Wembley | White City | Woolwich

International offices

China | Hong Kong SAR | India | Indonesia | Qatar | Malaysia | Middle East | Pakistan
Singapore | South Africa | Thailand | Turkey



Benham & Reeves