



Benham & Reeves

Central Avenue, Hammersmith And Fulham, SW6

£1,731 per week, £7,500 per month + fees

 4 Bedrooms  2 Bathrooms  Furnished

A Stunning, large apartment, located along the River Thames in the Fulham Riverside development. Imperial Wharf overground station is within walking distance and has excellent travel links around London.

Please [click here](#) for full detail

Property features

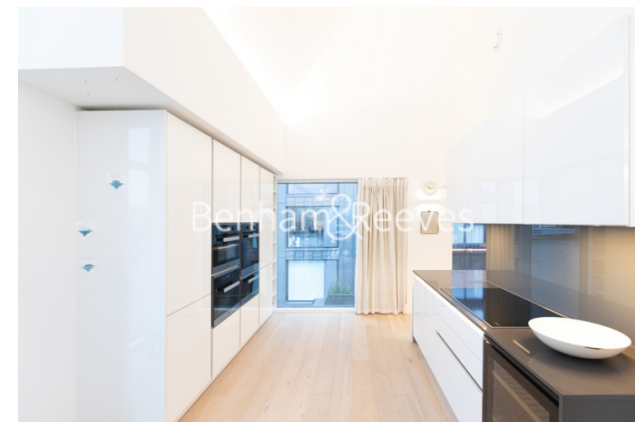
Contemporary 2nd, 3rd, and 4th floor riverside apartment | 2 Chic shower rooms (1 ensuite), bathroom and a WC | High spec kitchen with Miele appliances and fabulous dining | 4 Double bedrooms with built-in wardrobes and a view | Spacious terrace with seating space and a view of the pier | EPC-B | 2 Elegant receptions with high arching ceilings and windows | Landscaped communal courtyard and easy access to the Thames | Allocated parking space available | Nearby Imperial Wharf overground Station

For more information about this property, please call our Fulham branch on

020 7348 7620

Redress & Client Money Protection :

Benham and Reeves are members of The Property Ombudsman redress scheme and have Client Money protection with ARLA Propertymark. You can find more information on our website at <https://www.benhams.com/membership/>



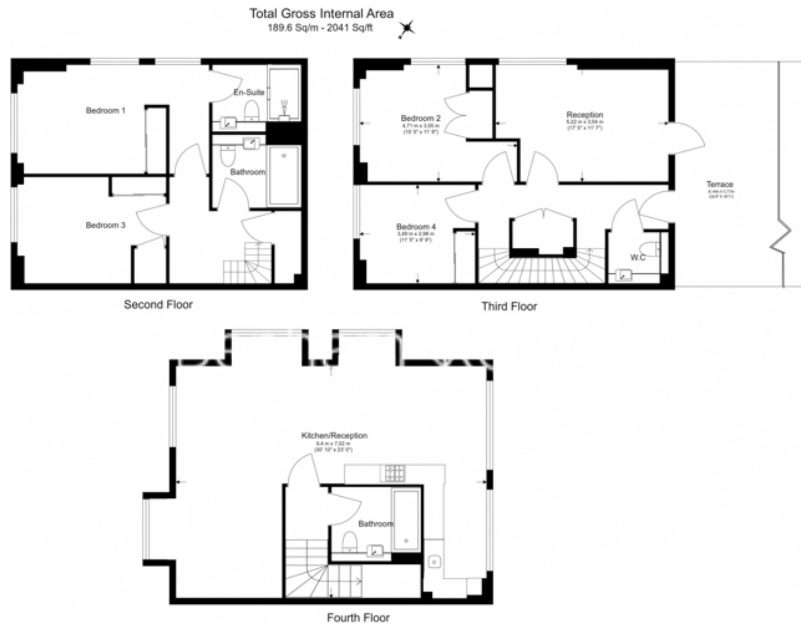
Benham & Reeves



Central Avenue, Hammersmith And Fulham, SW6

www.benhams.com

£1,731 per week, £7,500 per month + fees



Floor Plan measurements are approximate and are for illustrative purposes only. While we do not doubt the floor plans accuracy, we make no guarantee, warranty or representation as to the accuracy and completeness of the floor plan.

Score	Energy rating	Current	Potential
92+	A		
81-91	B	81 B	81 B
69-80	C		
55-68	D		
39-54	E		
21-38	F		
1-20	G		

London branches open six days a week Mon - Sat

Canary Wharf | City | Colindale | Dartmouth Park | Ealing | Fulham
Hammersmith | Hampstead | Highgate | Hyde Park | Kensington | Kew
Knightsbridge | Nine Elms | Shoreditch | Southall | Surrey Quays
Wapping | Wembley | White City | Woolwich



International offices

China | Hong Kong SAR | India | Indonesia | Qatar | Malaysia | Middle East | Pakistan
Singapore | South Africa | Thailand | Turkey