



Benham & Reeves

Caro Point, Grosvenor Waterside, SW1

£695 per week, £3,012 per month + fees

 1 Bedroom  1 Bathroom  Furnished

A 521 sq ft ONE-BEDROOM apartment with BALCONY on the 5th Floor of CARO POINT in the desirable GROSVENOR WATERSIDE where residents benefit from 24 Hr Concierge, luxury Health Club, on-site market & coffee shop. VICTORIA & Sloane Square Stations are 5 minutes by bus.

Please [click here](#) for full detail

Property features

1 Bedroom | Balcony | 24 Hr Concierge | Balcony | Health Club | EPC-C | 527 sq ft | Health Club | Furnished | Nearby Victoria Station

For more information about this property,
please call our Knightsbridge branch on

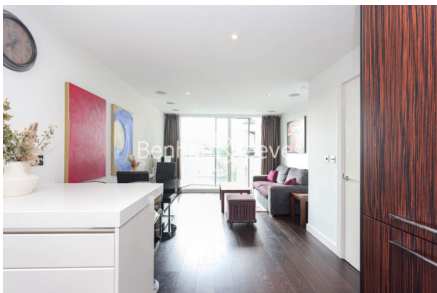
020 7581 2112

Redress & Client Money Protection :

Benham and Reeves are members of The Property Ombudsman redress scheme and have Client Money protection with ARLA Propertymark. You can find more information on our website at <https://www.benhams.com/membership/>



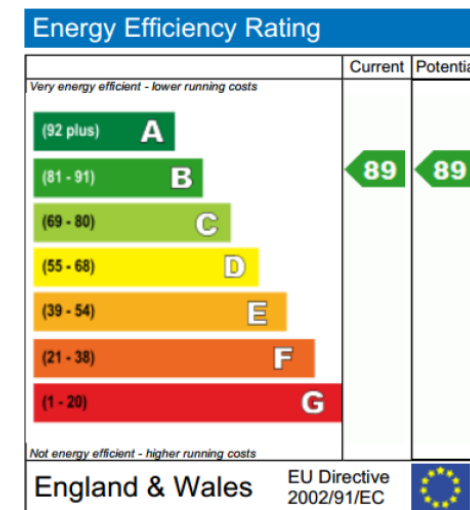
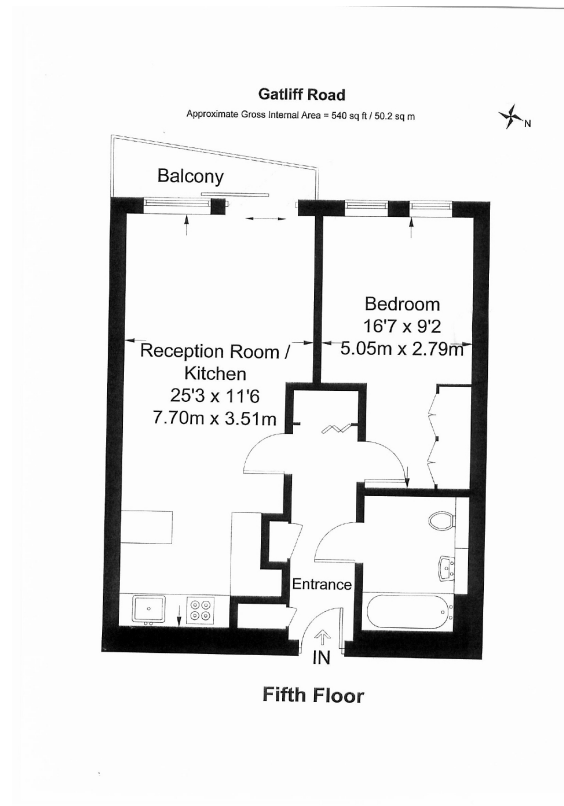
Benham & Reeves



Caro Point, Grosvenor Waterside, SW1

£695 per week, £3,012 per month + fees

www.benhams.com



London branches open six days a week Mon - Sat

Canary Wharf | City | Colindale | Dartmouth Park | Ealing | Fulham
Hammersmith | Hampstead | Highgate | Hyde Park | Kensington | Kew
Knightsbridge | Nine Elms | Shoreditch | Southall | Surrey Quays
Wapping | Wembley | White City | Woolwich

International offices

China | Hong Kong SAR | India | Indonesia | Qatar | Malaysia | Middle East | Pakistan
Singapore | South Africa | Thailand | Turkey



Benham & Reeves