



Benham & Reeves

**Gordian Apartments, Greenwich, SE10**

£623 per week, £2,700 per month + fees

 2 Bedrooms    2 Bathrooms    Furnished

Spacious, bright apartment situated within a sought after development with easy access to historic Greenwich Park, and the world-class O2 arena. Located with easy access to Greenwich Station DLR and Rail services (Jubilee Line).

Please [click here](#) for full detail

## Property features

**Two Bedrooms | Two Bathrooms | Private Balcony | River View | Furnished | EPC-B | Concierge Service | Gym Access | Communal Resident Gardens | Close to North Greenwich Station for Jubilee Line**

For more information about this property, please call our Surrey Quays branch on

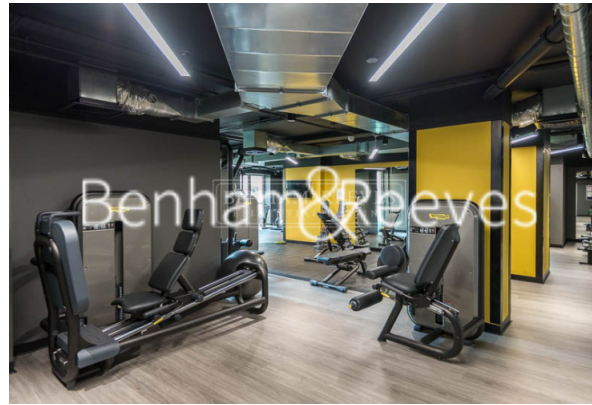
**020 7740 3050**

Redress & Client Money Protection :

Benham and Reeves are members of The Property Ombudsman redress scheme and have Client Money protection with ARLA Propertymark. You can find more information on our website at <https://www.benhams.com/membership/>



Benham & Reeves

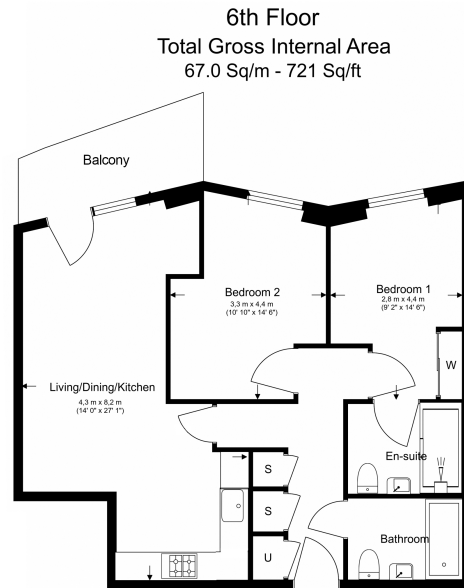




# Gordian Apartments, Greenwich, SE10

£623 per week, £2,700 per month + fees

www.benhams.com



Benham & Reeves

Floor Plan measurements are approximate and are for illustrative purposes only. While we do not doubt the floor plans accuracy, we make no guarantee, warranty or representation as to the accuracy and completeness of the floor plan.

Score	Energy rating	Current	Potential
92+	A		
81-91	B	85 B	85 B
69-80	C		
55-68	D		
39-54	E		
21-38	F		
1-20	G		

## London branches open six days a week Mon - Sat

Canary Wharf | City | Colindale | Dartmouth Park | Ealing | Fulham  
Hammersmith | Hampstead | Highgate | Hyde Park | Kensington | Kew  
Knightsbridge | Nine Elms | Shoreditch | Southall | Surrey Quays  
Wapping | Wembley | White City | Woolwich

## International offices

China | Hong Kong SAR | India | Indonesia | Qatar | Malaysia | Middle East | Pakistan  
Singapore | South Africa | Thailand | Turkey



Benham & Reeves