



Benham & Reeves

Burney Street, Greenwich, SE10

£519 per week, £2,249 per month + fees

 1 Bedroom  1 Bathroom  Furnished

A well-presented bright apartment, with landscaped courtyard, situated in a popular development close to Greenwich Park, with easy access to the Thames Park and the amenities of Greenwich Village.

Please [click here](#) for full detail

Property features

One Bedroom | One Bathroom | Landscaped Courtyard | Furnished. Fitted Kitchen | Bright and Spacious | EPC-B | Underfloor Heating | 24hr Concierge | Bike storage | Close to Greenwich Park

For more information about this property, please call our Woolwich branch on

020 8051 0700

Redress & Client Money Protection :

Benham and Reeves are members of The Property Ombudsman redress scheme and have Client Money protection with ARLA Propertymark. You can find more information on our website at <https://www.benhams.com/membership/>



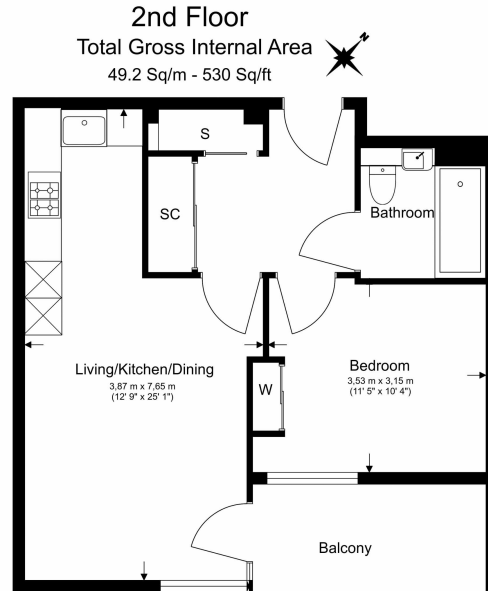
Benham & Reeves



Burney Street, Greenwich, SE10

£519 per week, £2,249 per month + fees

www.benhams.com



Floor Plan measurements are approximate and are for illustrative purposes only. While we do not doubt the floor plans accuracy, we make no guarantee, warranty or representation as to the accuracy and completeness of the floor plan.

Score	Energy rating	Current	Potential
92+	A		
81-91	B	89 B	89 B
69-80	C		
55-68	D		
39-54	E		
21-38	F		
1-20	G		

London branches open six days a week Mon - Sat

Canary Wharf | City | Colindale | Dartmouth Park | Ealing | Fulham
Hammersmith | Hampstead | Highgate | Hyde Park | Kensington | Kew
Knightsbridge | Nine Elms | Shoreditch | Southall | Surrey Quays
Wapping | Wembley | White City | Woolwich

International offices

China | Hong Kong SAR | India | Indonesia | Qatar | Malaysia | Middle East | Pakistan
Singapore | South Africa | Thailand | Turkey

