



Benham & Reeves

Watson House, Greenleaf Walk, UB1

£392 per week, £1,699 per month + fees

 1 Bedroom  1 Bathroom  Furnished

This stunning 4th floor one bedroom apartment is situated in an outstanding biodiverse Berkeley development on the Western fringe of London featuring great views of the surrounding landscaped gardens. Located a short walk from Southall Station (Zone 4), a strategic stop on the Elizabeth Line.

Please [click here](#) for full detail

Property features

Concierge | Gym | Cinema room | Residents lounge | Balcony | EPC-B | Wood floors | Furnished | Nearby Southall Station

For more information about this property, please call our Southall branch on

020 8051 0800

Redress & Client Money Protection :

Benham and Reeves are members of The Property Ombudsman redress scheme and have Client Money protection with ARLA Propertymark. You can find more information on our website at <https://www.benhamandreeves.com/membership/>



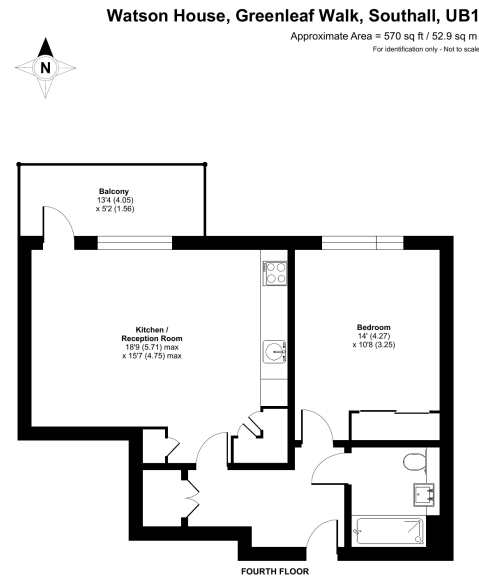
Benham & Reeves



Watson House, Greenleaf Walk, UB1

£392 per week, £1,699 per month + fees

www.benhams.com



Certified Property Measure
Floor plan produced in accordance with RICS Property Measurement Standards incorporating International Property Measurement Standards (IPMS) (Residential). © Benham & Reeves 2022
Produced for Benham & Reeves. REF: 1140122

Score	Energy rating	Current	Potential
92+	A		
81-91	B	84 B	84 B
69-80	C		
55-68	D		
39-54	E		
21-38	F		
1-20	G		

London branches open six days a week Mon - Sat

Canary Wharf | City | Colindale | Dartmouth Park | Ealing | Fulham
Hammersmith | Hampstead | Highgate | Hyde Park | Kensington | Kew
Knightsbridge | Nine Elms | Shoreditch | Southall | Surrey Quays
Wapping | Wembley | White City | Woolwich

International offices

China | Hong Kong SAR | India | Indonesia | Qatar | Malaysia | Middle East | Pakistan
Singapore | South Africa | Thailand | Turkey



Benham & Reeves