



Benham & Reeves

**Portland Place, Greenhithe, DA9**

£415 per week, £1,800 per month + fees

 2 Bedrooms    2 Bathrooms    Furnished

Superb spacious 1st floor apartment situated within a popular development offering River views across the Thames. Located near to a fast track bus service and ten minutes on foot from Greenhithe mainline Station.

Please [click here](#) for full detail

## Property features

**2 bed 2 bath located on the 1st floor | Open plan kitchen with well known kitchen appliances | 180 degree panoramic river views | 1 allocated parking space | Balcony | EPC-B | Close to Amenities | A2 and Ebbsfleet International Station | 10 minutes walk to Greenhithe station**

For more information about this property,  
please call our Woolwich branch on

**020 8051 0700**

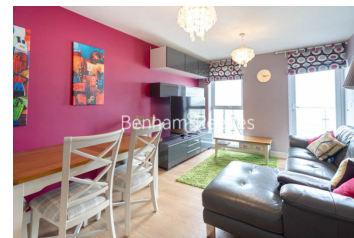
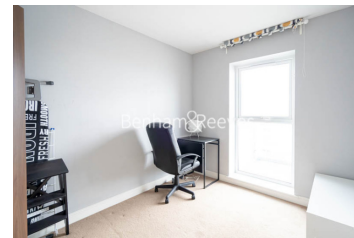
Redress & Client Money Protection :

Benham and Reeves are members of The Property Ombudsman redress scheme and have Client Money protection with ARLA Propertymark. You can find more information on our website at <https://www.benham.com/membership/>



**Benham & Reeves**

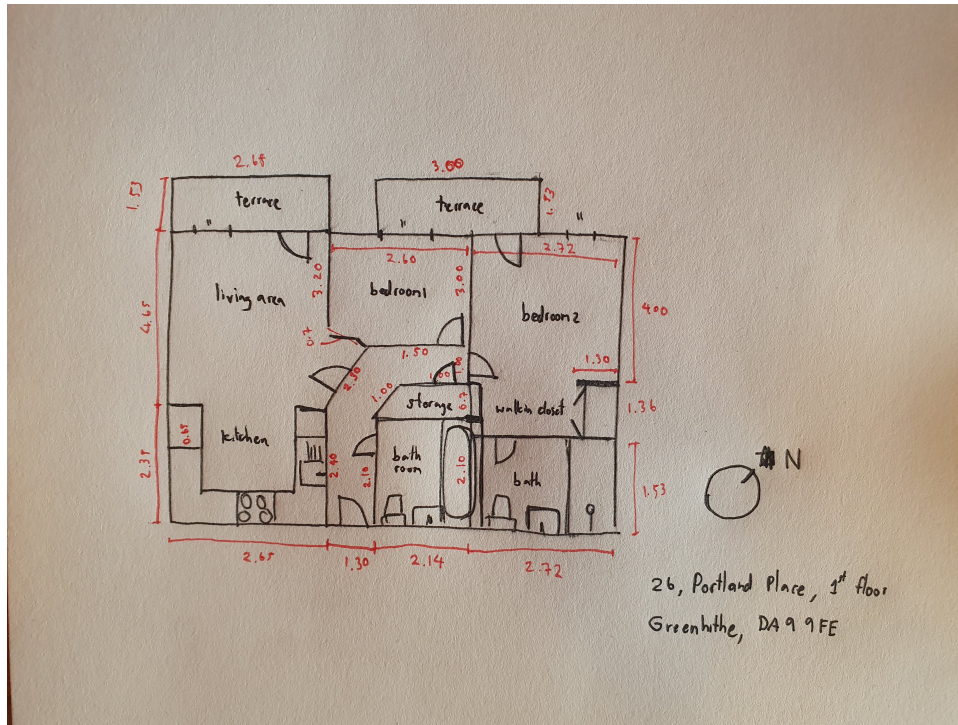




# Portland Place, Greenhithe, DA9

£415 per week, £1,800 per month + fees

www.benhams.com



Score	Energy rating	Current	Potential
92+	A		
81-91	B	83   B	88   B
69-80	C		
55-68	D		
39-54	E		
21-38	F		
1-20	G		

## London branches open six days a week Mon - Sat

Canary Wharf | City | Colindale | Dartmouth Park | Ealing | Fulham  
Hammersmith | Hampstead | Highgate | Hyde Park | Kensington | Kew  
Knightsbridge | Nine Elms | Shoreditch | Southall | Surrey Quays  
Wapping | Wembley | White City | Woolwich

## International offices

China | Hong Kong SAR | India | Indonesia | Qatar | Malaysia | Middle East | Pakistan  
Singapore | South Africa | Thailand | Turkey

