



Benham & Reeves

The Boulevard, Fulham, SW6

£738 per week, £3,198 per month + fees

 2 Bedrooms  2 Bathrooms  Furnished

A stunning luxury 16th floor apartment with direct River views and good security. ideally located a short walk to The City, Shoreditch, Brick Lane, Spitalfields Market and the DLR for Canary Wharf

Please [click here](#) for full detail

Property features

2 Bedrooms | 2 Bathrooms | Reception | Furnished | Fitted Kitchen | EPC-C | 24 Hour Concierge | Gym | Nearby Imperial Wharf Station

For more information about this property,
please call our Fulham branch on

020 7348 7620

Redress & Client Money Protection :

Benham and Reeves are members of The Property Ombudsman redress scheme and have Client Money protection with ARLA Propertymark. You can find more information on our website at <https://www.benhams.com/membership/>



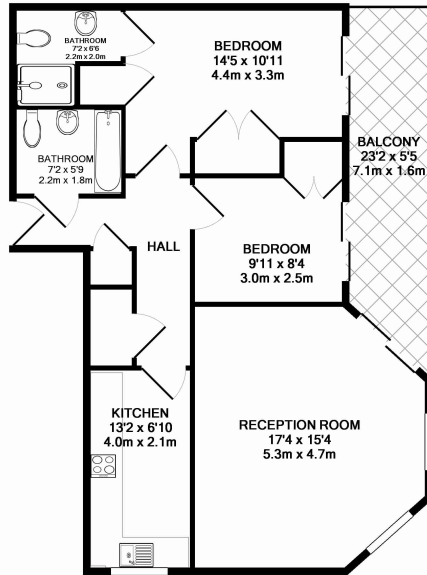
Benham & Reeves



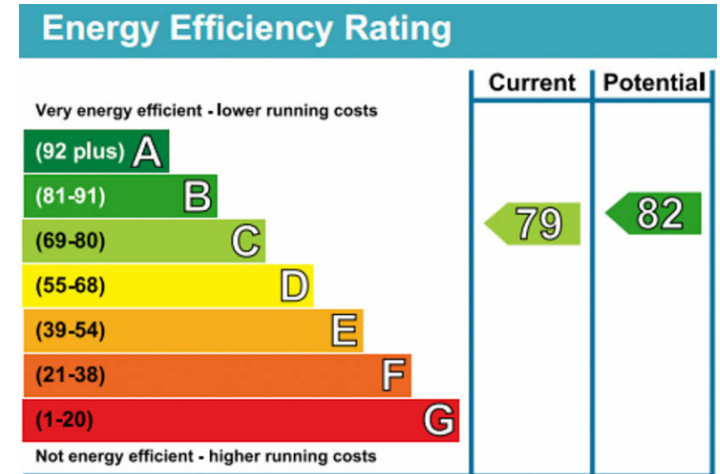
The Boulevard, Fulham, SW6

£738 per week, £3,198 per month + fees

www.benhams.com



00077-18MPIW-SW6 - 7TH FLOOR
 TOTAL APPROX. FLOOR AREA 757 SQ.FT. (70.4 SQ.M.)
 Whilst every attempt has been made to ensure the accuracy of the floor plan contained here, measurements of doors, windows, rooms and any other items are approximate and no responsibility is taken for any error, omission, or mis-statement. This plan is for illustrative purposes only and should be used as such by any prospective purchaser. The services, systems and appliances shown have not been tested and no guarantee as to their operability or efficiency can be given.
 Made with Metropix ©2015



London branches open six days a week Mon - Sat

Canary Wharf | City | Colindale | Dartmouth Park | Ealing | Fulham
 Hammersmith | Hampstead | Highgate | Hyde Park | Kensington | Kew
 Knightsbridge | Nine Elms | Shoreditch | Southall | Surrey Quays
 Wapping | Wembley | White City | Woolwich

International offices

China | Hong Kong SAR | India | Indonesia | Qatar | Malaysia | Middle East | Pakistan
 Singapore | South Africa | Thailand | Turkey

