



Benham & Reeves

Park Street, Fulham, SW6

£808 per week, £3,500 per month + fees

 2 Bedrooms  2 Bathrooms  Furnished

A modern high-spec apartment with luxurious resident facilities situated in a sought-after waterside development in Fulham. Imperial Wharf Overground is the nearest transport station, providing excellent links to the rest of the Capital.

Please [click here](#) for full detail

Property features

2 Bedrooms | 2 Bathrooms | Reception | Furnished | Fitted Kitchen | EPC-C | 24 Hour Concierge | Gym and Spa | Nearby Imperial Wharf Station

For more information about this property,
please call our Fulham branch on

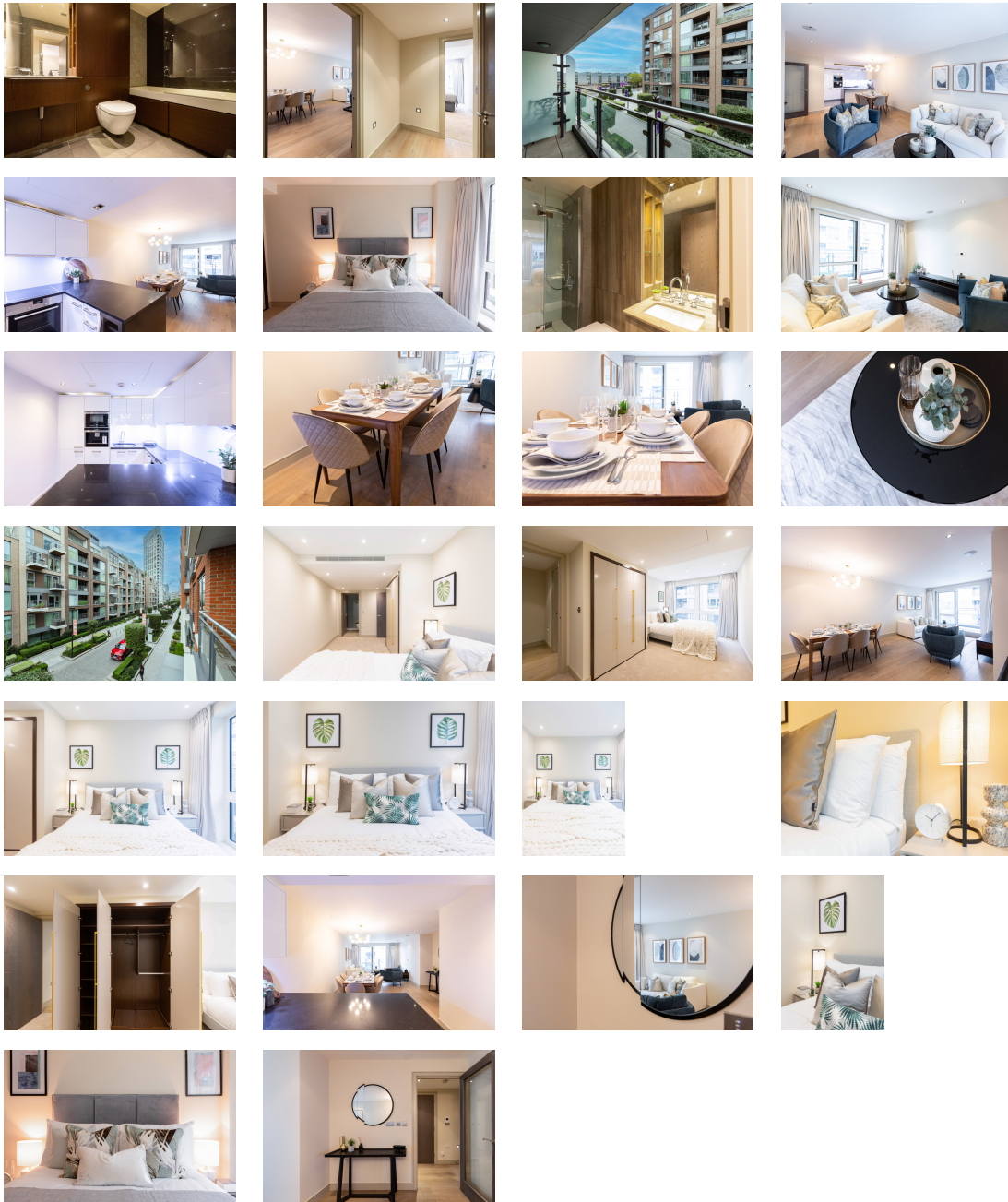
020 7348 7620

Redress & Client Money Protection :

Benham and Reeves are members of The Property Ombudsman redress scheme and have Client Money protection with ARLA Propertymark. You can find more information on our website at <https://www.benhams.com/membership/>



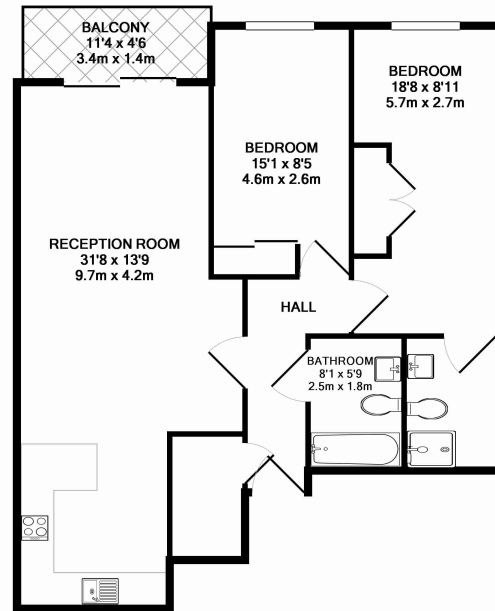
Benham & Reeves



Park Street, Fulham, SW6

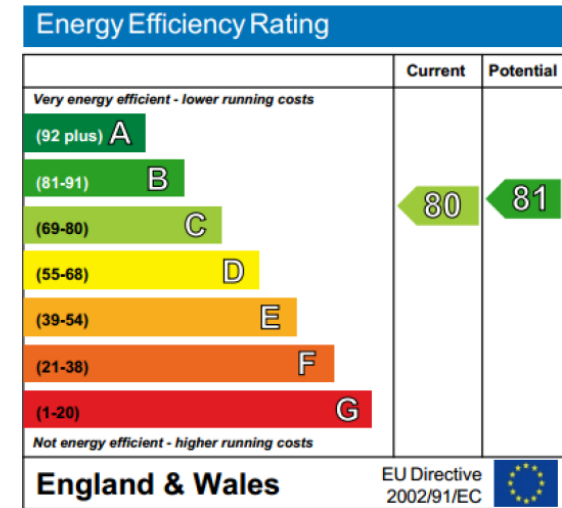
£808 per week, £3,500 per month + fees

www.benhams.com



COMPASS HOUSE - IMPERIAL WHARF
TOTAL APPROX. FLOOR AREA 843 SQ.FT. (78.3 SQ.M.)

Whilst every attempt has been made to ensure the accuracy of the floor plan contained here, measurements of doors, windows, rooms and any other items are approximate and no responsibility is taken for any error, omission, or mis-statement. This plan is for illustrative purposes only and should be used as such by any prospective purchaser. The services, systems and appliances shown have not been tested and no guarantee as to their operability or efficiency can be given
Made with Metropix ©2014



London branches open six days a week Mon - Sat

Canary Wharf | City | Colindale | Dartmouth Park | Ealing | Fulham
Hammersmith | Hampstead | Highgate | Hyde Park | Kensington | Kew
Knightsbridge | Nine Elms | Shoreditch | Southall | Surrey Quays
Wapping | Wembley | White City | Woolwich

International offices

China | Hong Kong SAR | India | Indonesia | Qatar | Malaysia | Middle East | Pakistan
Singapore | South Africa | Thailand | Turkey

