



Benham & Reeves

Lensbury Avenue, Fulham, SW6

£1,795 per week, £7,778 per month + fees

 3 Bedrooms  3 Bathrooms  Furnished

A spacious and contemporary 4th floor apartment set in the sought-after Riverside Imperial Wharf development close to the amenities of Fulham. The property features two private balconies affording direct river views, communal gardens and 24-hour concierge. Serviced by Imperial Wharf Station minutes away.

Please [click here](#) for full detail

Property features

3 Bedrooms | 3 Bathrooms | Reception | Furnished | Fitted Kitchen | EPC-B | Two Balconies with River Views | Underground Parking | Nearby Imperial Wharf Station

For more information about this property, please call our Fulham branch on

020 7348 7620

Redress & Client Money Protection :

Benham and Reeves are members of The Property Ombudsman redress scheme and have Client Money protection with ARLA Propertymark. You can find more information on our website at <https://www.benhams.com/membership/>



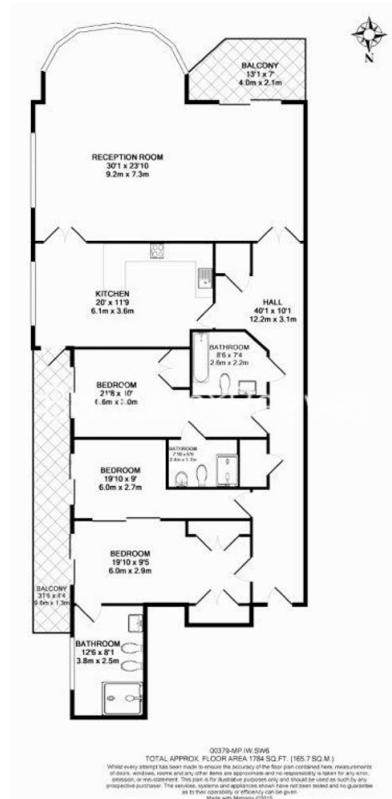
Benham & Reeves




Lensbury Avenue, Fulham, SW6

£1,795 per week, £7,778 per month + fees

www.benhams.com



Energy Efficiency Rating		
	Current	Potential
Very energy efficient - lower running costs		
(92 plus) A		
(81-91) B	82	84
(69-80) C		
(55-68) D		
(39-54) E		
(21-38) F		
(1-20) G		
Not energy efficient - higher running costs		
England & Wales	EU Directive 2002/91/EC 	

London branches open six days a week Mon - Sat

Canary Wharf | City | Colindale | Dartmouth Park | Ealing | Fulham
Hammersmith | Hampstead | Highgate | Hyde Park | Kensington | Kew
Knightsbridge | Nine Elms | Shoreditch | Southall | Surrey Quays
Wapping | Wembley | White City | Woolwich

International offices

China | Hong Kong SAR | India | Indonesia | Qatar | Malaysia | Middle East | Pakistan
Singapore | South Africa | Thailand | Turkey

