



Benham & Reeves

Octavia House, Fulham, SW6

£475 per week, £2,058 per month + fees

 Studio  1 Bathroom  Furnished

Trendy 3rd floor studio apartment situated in a vibrant Riverside development in Fulham. A stone's throw from Imperial Wharf Overground station

Please [click here](#) for full detail

Property features

Porter | Bay Windows | Close to Local Amenities | Open plan living room Kitchen | Gym | EPC-B | Good Transport Links | Floor-To-Ceiling Windows | 24-Hour Concierge | Nearby Imperial Wharf Overground station

For more information about this property,
please call our Fulham branch on

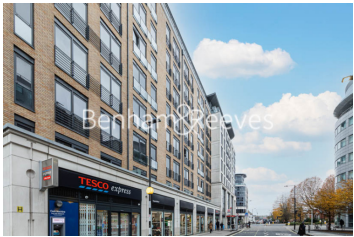
020 7348 7620

Redress & Client Money Protection :

Benham and Reeves are members of The Property Ombudsman redress scheme and have Client Money protection with ARLA Propertymark. You can find more information on our website at <https://www.benhams.com/membership/>



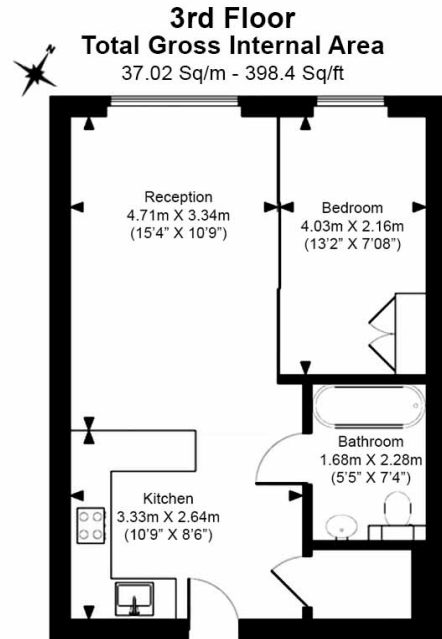
Benham & Reeves



Octavia House, Fulham, SW6

£475 per week, £2,058 per month + fees

www.benhams.com



Floor Plan measurements are approximate and are for illustrative purposes only. While we do not doubt the floor plans accuracy, we make no guarantee, warranty or representation as to the accuracy and completeness of the floor plan.

Score	Energy rating	Current	Potential
92+	A		
81-91	B	81 B	84 B
69-80	C		
55-68	D		
39-54	E		
21-38	F		
1-20	G		

London branches open six days a week Mon - Sat

Canary Wharf | City | Colindale | Dartmouth Park | Ealing | Fulham
 Hammersmith | Hampstead | Highgate | Hyde Park | Kensington | Kew
 Knightsbridge | Nine Elms | Shoreditch | Southall | Surrey Quays
 Wapping | Wembley | White City | Woolwich



International offices

China | Hong Kong SAR | India | Indonesia | Qatar | Malaysia | Middle East | Pakistan
 Singapore | South Africa | Thailand | Turkey