



Benham & Reeves

Copthorne hotel, Fulham Road, SW6

£1,639 per week, £7,102 per month + fees

 2 Bedrooms  2 Bathrooms  Furnished

Rare spacious 9th floor penthouse apartment, with huge private terrace, situated in a desirable Chelsea Village development.

Please [click here](#) for full detail

Property features

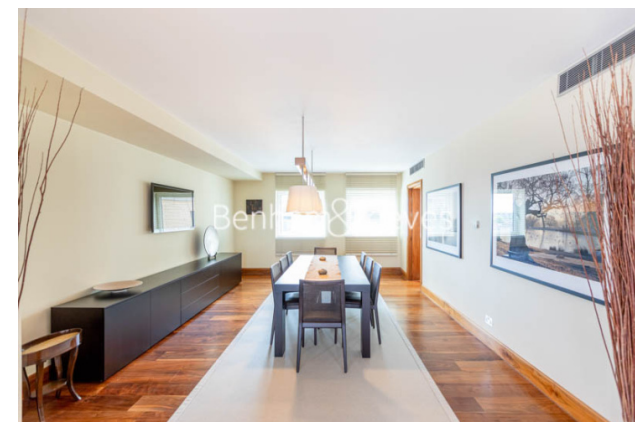
Rare 2 Double Bedroom Apartment With Built-In Wardrobe | Fully Fitted Kitchen Integrated With Well-Known Appliances | Internal Area: 2200 sqft / View Of London Horizon | Air Ventilation / Underfloor Heating / Air Conditioning | Hot water, electricity, air conditioning and council tax inc | EPC-B | 24 Hr Concierge / 24 Hr Security / Communal Gardens / Bars | Extra-Large Reception Room With Dining Area | Large Roof Terrace | Located In The Heart Of Chelsea

For more information about this property, please call our Fulham branch on

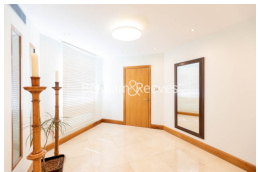
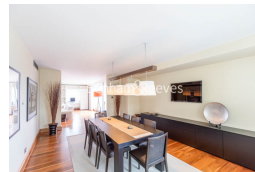
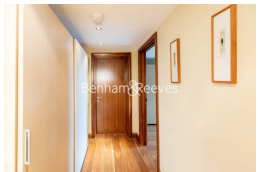
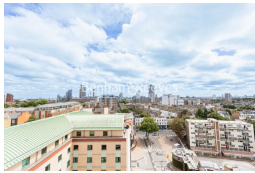
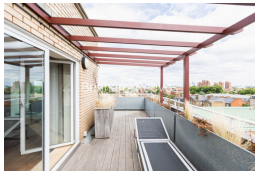
020 7348 7620

Redress & Client Money Protection :

Benham and Reeves are members of The Property Ombudsman redress scheme and have Client Money protection with ARLA Propertymark. You can find more information on our website at <https://www.benhams.com/membership/>



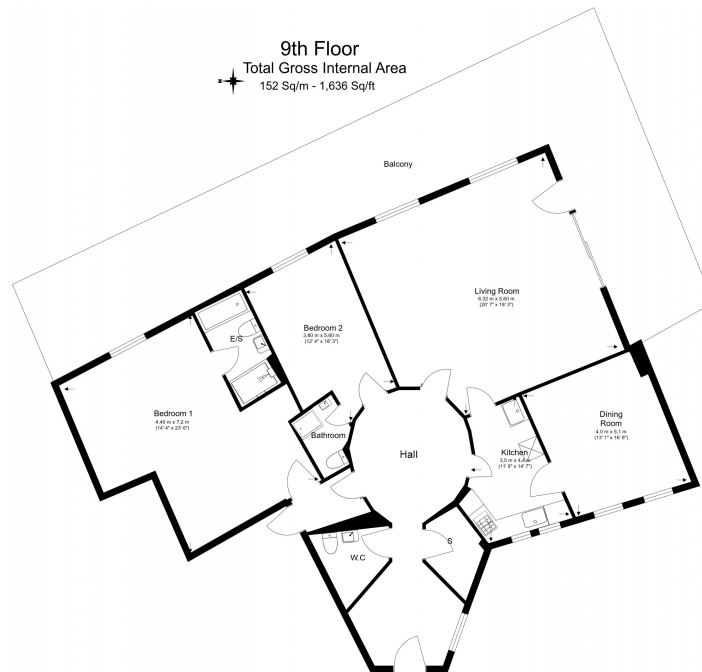
Benham & Reeves



Copthorne hotel, Fulham Road, SW6

£1,639 per week, £7,102 per month + fees

www.benhams.com



Floor Plan measurements are approximate and are for illustrative purposes only. While we do not doubt the floor plans accuracy, we make no guarantee, warranty or representation as to the accuracy and completeness of the floor plan.

Energy performance certificate (EPC) - Final energy certificate - 100126

Energy performance certificate (EPC)

Landlord Name: COPTHORNE HOTEL LTD	Energy rating: B	Valid until: 15 August 2032
Property Address: 100126	Current number: 100126	Current number: 100126

Property type
Mid-floor flat

Total floor area
227 square metres

Rules on letting this property
Properties can let if they have an energy rating from A to E.
You can see details for landlords on the [Government and landlord's information website](#) (<http://www.gov.uk/government/organisations/energy-efficiency-trust>)

Energy efficiency rating for this property
The property's current energy rating is B. It has the potential to be B.
[See how to improve the property's energy performance.](#)

<http://www.energy.gov.uk/energy-efficiency/energy-ratings/100126>

London branches open six days a week Mon - Sat

Canary Wharf | City | Colindale | Dartmouth Park | Ealing | Fulham
Hammersmith | Hampstead | Highgate | Hyde Park | Kensington | Kew
Knightsbridge | Nine Elms | Shoreditch | Southall | Surrey Quays
Wapping | Wembley | White City | Woolwich

International offices

China | Hong Kong SAR | India | Indonesia | Qatar | Malaysia | Middle East | Pakistan
Singapore | South Africa | Thailand | Turkey



Benham & Reeves