



Benham & Reeves

## Parr's Way, Fulham Reach, W6

£1,142 per week, £4,950 per month + fees

 2 Bedrooms    2 Bathrooms    Unfurnished

**\*PARKING INCLUDED\*\*** This exquisitely presented, luxurious apartment is located in the coveted Goldhurst House within the prestigious Fulham Reach riverside development. Offering an unparalleled living experience, this property boasts a prime location just moments from Hammersmith Underground Station, with seamless access to the Piccadilly, Circle, District, and Hammersmith & City lines.

Please [click here](#) for full detail

## Property features

**Two Double Bedroom with Built-in Wardrobes | Fully Fitted Kitchen Integrated with Well-Known Appliances | Luxurious Double Reception Room with Dining Area | 24 Hr Concierge / 24 Hr Security / Communal Gardens | Range of World-Class Amenities | EPC-B | Equipped with a parking space and accessible bike storage | Air Ventilation / Underfloor Heating / Air Conditioning | Seamless access to the balcony from every room | Nearby Hammersmith Tube Station**

For more information about this property, please call our Hammersmith branch on

**020 8600 0960**

Redress & Client Money Protection :

Benham and Reeves are members of The Property Ombudsman redress scheme and have Client Money protection with ARLA Propertymark. You can find more information on our website at <https://www.benhams.com/membership/>



Benham & Reeves

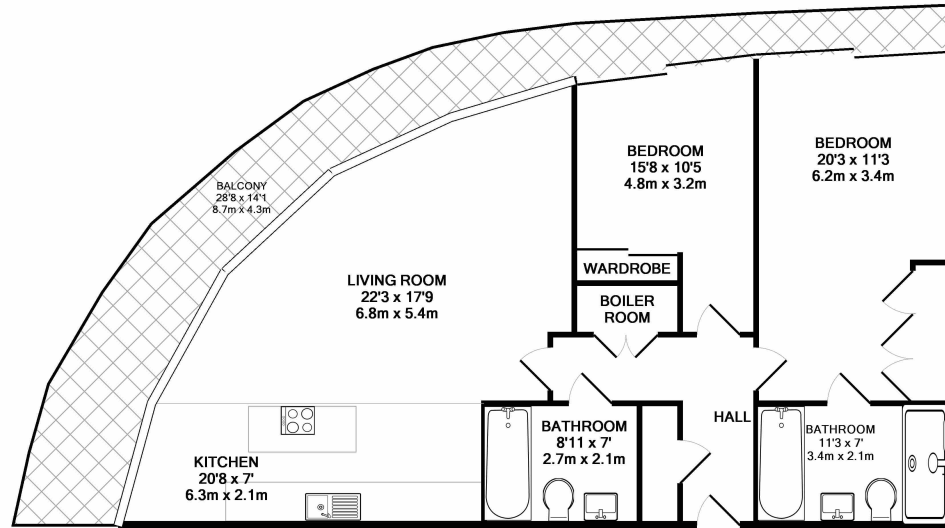




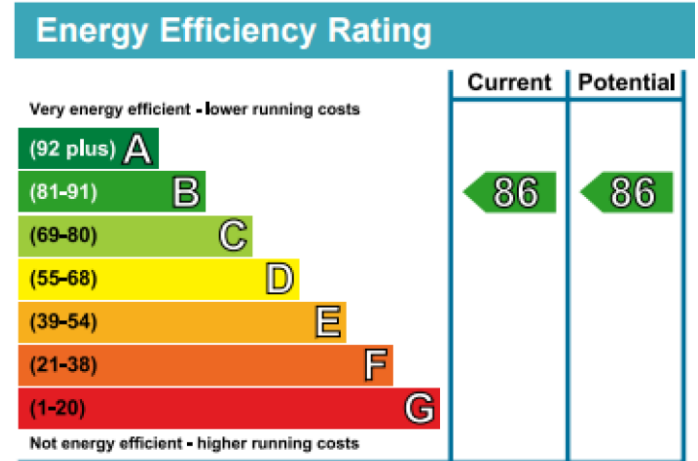
# Parr's Way, Fulham Reach, W6

£1,142 per week, £4,950 per month + fees

www.benhams.com



6GH.W6  
 TOTAL APPROX. FLOOR AREA 1057 SQ. FT. (98.2 SQ. M.)  
 Whilst every attempt has been made to ensure the accuracy of the floor plan contained here, measurements of doors, windows, rooms and any other items are approximate and no responsibility is taken for any error, omission, or mis-statement. This plan is for illustrative purposes only and should be used as such by any prospective purchaser. The services, systems and appliances shown have not been tested and no guarantee as to their operability or efficiency can be given  
 Made with Metropix ©2016



## London branches open six days a week Mon - Sat

Canary Wharf | City | Colindale | Dartmouth Park | Ealing | Fulham  
 Hammersmith | Hampstead | Highgate | Hyde Park | Kensington | Kew  
 Knightsbridge | Nine Elms | Shoreditch | Southall | Surrey Quays  
 Wapping | Wembley | White City | Woolwich



## International offices

China | Hong Kong SAR | India | Indonesia | Qatar | Malaysia | Middle East | Pakistan  
 Singapore | South Africa | Thailand | Turkey

