



Benham & Reeves

Royal Drive, Friern Barnet, N11

£531 per week, £2,301 per month + fees

 2 Bedrooms  2 Bathrooms  Furnished

This must-see contemporary apartment, with one allocated parking bay, is located within a luxurious development in a prime location. Seventeen minutes on foot from Arnos Grove for transport options.

Please [click here](#) for full detail

Property features

Two Bedrooms | Two Bathrooms | Reception | Modern | Furnished | EPC-B | Parking | Large windows | Close to exclusive amenities | New Southgate Station

For more information about this property, please call our Hampstead branch on

020 7435 9681

Redress & Client Money Protection :

Benham and Reeves are members of The Property Ombudsman redress scheme and have Client Money protection with ARLA Propertymark. You can find more information on our website at <https://www.benhams.com/membership/>



Benham & Reeves

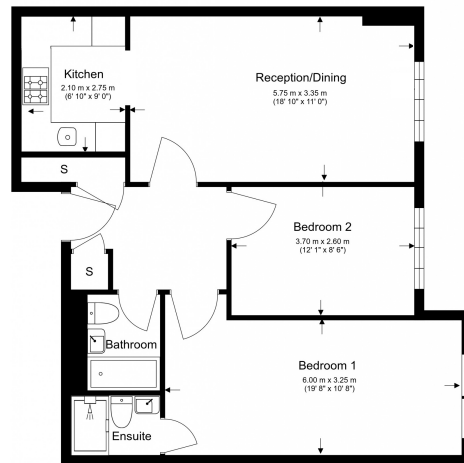


Royal Drive, Friern Barnet, N11

£531 per week, £2,301 per month + fees

www.benhams.com

3rd Floor
Total Gross Internal Area
70 Sq/m - 753 Sq/ft



Floor Plan measurements are approximate and are for illustrative purposes only. While we do not doubt the floor plans accuracy, we make no guarantee, warranty or representation as to the accuracy and completeness of the floor plan.

Score	Energy rating	Current	Potential
92+	A		
81-91	B	82 B	82 B
69-80	C		
55-68	D		
39-54	E		
21-38	F		
1-20	G		

London branches open six days a week Mon - Sat

Canary Wharf | City | Colindale | Dartmouth Park | Ealing | Fulham
Hammersmith | Hampstead | Highgate | Hyde Park | Kensington | Kew
Knightsbridge | Nine Elms | Shoreditch | Southall | Surrey Quays
Wapping | Wembley | White City | Woolwich

International offices

China | Hong Kong SAR | India | Indonesia | Qatar | Malaysia | Middle East | Pakistan
Singapore | South Africa | Thailand | Turkey

