



Benham & Reeves

Levett Square, Emerald Gardens, Kew, TW9

£635 per week, £2,750 per month + fees

 2 Bedrooms  2 Bathrooms  Furnished

Stylish apartment, with underground parking, situated in a popular development in Kew conveniently positioned nearby the amenities of Kew Retail Park and the Kew Royal Botanical Gardens. Located a brief walk from Kew Gardens Station.

Please [click here](#) for full detail

Property features

Underground Parking | 24hrs Concierge | Private Balcony | Wine Cooler | On Site Amenities | EPC-B | Communal Gardens | Bicycle Storage | Close To Kew Retail Park | Nearby Kew Gardens Station

For more information about this property, please call our Kew branch on

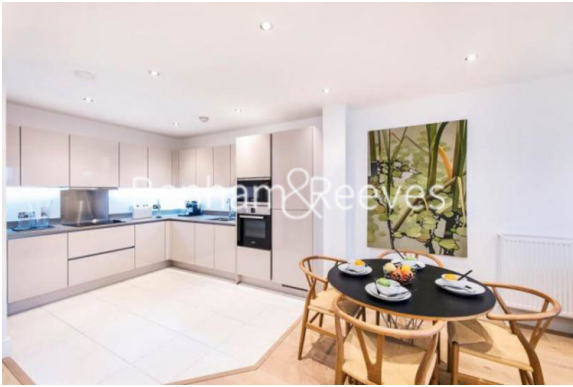
020 8326 1960

Redress & Client Money Protection :

Benham and Reeves are members of The Property Ombudsman redress scheme and have Client Money protection with ARLA Propertymark. You can find more information on our website at <https://www.benhams.com/membership/>



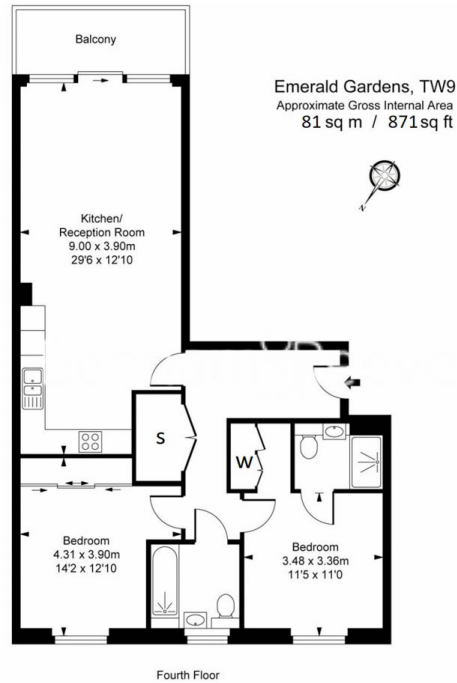
Benham & Reeves



Levett Square, Emerald Gardens, Kew, TW9

£635 per week, £2,750 per month + fees

www.benhams.com



This plan is not to scale. It is for guidance and not for valuation purposes.
All measurements and areas are approximate only, and have been prepared in accordance with the current edition of the RICS Code of Measuring Practice.

Score	Energy rating	Current	Potential
92+	A		
81-91	B	88 B	88 B
69-80	C		
55-68	D		
39-54	E		
21-38	F		
1-20	G		

London branches open six days a week Mon - Sat

Canary Wharf | City | Colindale | Dartmouth Park | Ealing | Fulham
Hammersmith | Hampstead | Highgate | Hyde Park | Kensington | Kew
Knightsbridge | Nine Elms | Shoreditch | Southall | Surrey Quays
Wapping | Wembley | White City | Woolwich

International offices

China | Hong Kong SAR | India | Indonesia | Qatar | Malaysia | Middle East | Pakistan
Singapore | South Africa | Thailand | Turkey

