



Benham&Reeves

Longfield Avenue, Ealing, W5

£900 per week, £3,900 per month + fees

 2 Bedrooms  2 Bathrooms  Furnished

A large, two double bedroom apartment within the Fitzroy House phase at the Dickens Yard development in the heart of Ealing Broadway, W5. Just a few steps from Ealing Broadway underground (Elizabeth, Central Line and District) and overground stations, which offer access to central London in less than 25 minutes.

Please [click here](#) for full detail

Property features

2 Bedrooms | 2 Bathrooms | Wooden floors | Gym | Terrace | EPC-B | Swimming pool | Underground parking | 24hr concierge | Nearby Ealing Broadway Station

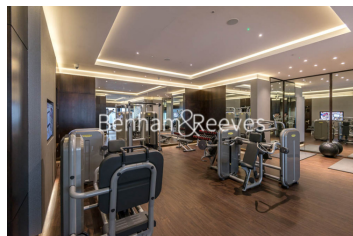
For more information about this property,
please call our Ealing branch on

020 8280 0140



Redress & Client Money Protection :
Benham and Reeves are members of The Property Ombudsman redress scheme and have Client Money protection with ARLA Propertymark.
You can find more information on our website at <https://www.benhamandreeves.com/membership/>

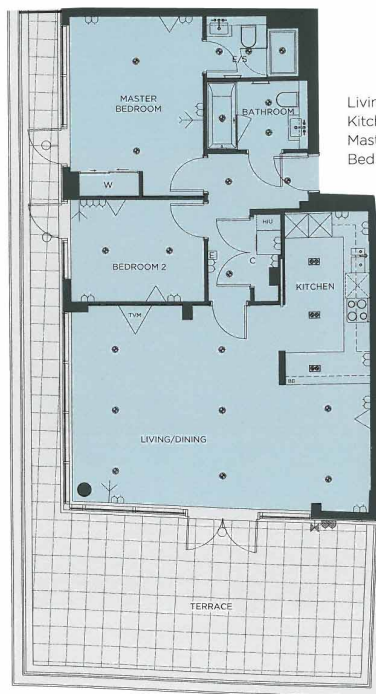
Benham & Reeves



Longfield Avenue, Ealing, W5

£900 per week, £3,900 per month + fees

www.benhams.com



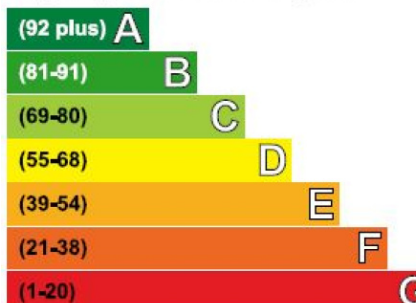
Living/Dining
Kitchen
Master Bedroom
Bedroom 2

7.48m x 5.20m
4.11m x 3.13m
4.49m x 3.34m
3.34m x 2.55m

24'6" x 17'1"
13'6" x 10'3"
14'9" x 11'0"
11'0" x 8'4"

Energy Efficiency Rating

Very energy efficient - lower running costs



Not energy efficient - higher running costs

Current	Potential
84	84

London branches open six days a week Mon - Sat

Canary Wharf | City | Colindale | Dartmouth Park | Ealing | Fulham
Hammersmith | Hampstead | Highgate | Hyde Park | Kensington | Kew
Knightsbridge | Nine Elms | Shoreditch | Southall | Surrey Quays
Wapping | Wembley | White City | Woolwich

International offices

China | Hong Kong SAR | India | Indonesia | Qatar | Malaysia | Middle East | Pakistan
Singapore | South Africa | Thailand | Turkey



Benham & Reeves