



Benham & Reeves

**Longfield Avenue, Ealing, W5**

£716 per week, £3,103 per month + fees

 2 Bedrooms    2 Bathrooms    Furnished

A superb 4th floor apartment situated within a sought-after development in the heart of Ealing Broadway. Just a few steps from Ealing Broadway underground (Elizabeth, Central and District lines) and overground stations, which offer access to the West End in less than 25 minutes.

Please [click here](#) for full detail

## Property features

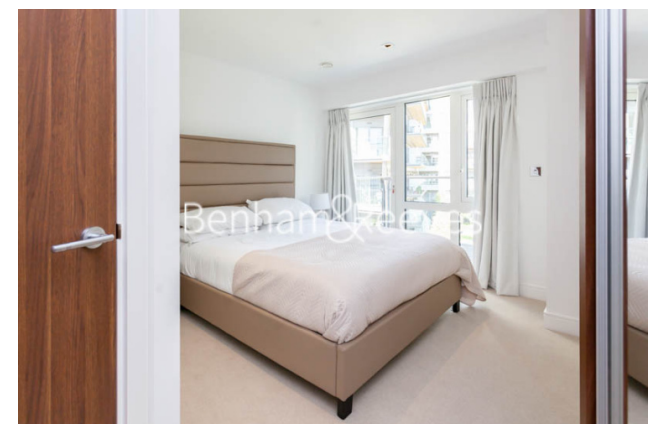
**2 Bedrooms | 2 Bathrooms | Reception | Wood floors | Interior designed | EPC-B | Terrace | Swimming pool & gym | 24hr concierge | Nearby Ealing Broadway Station**

For more information about this property,  
please call our Ealing branch on

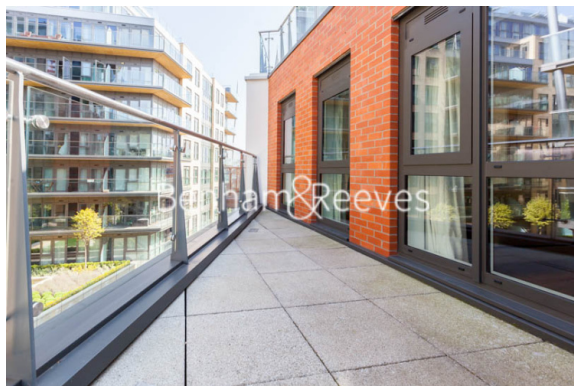
**020 8280 0140**

Redress & Client Money Protection :

Benham and Reeves are members of The Property Ombudsman redress scheme and have Client Money protection with ARLA Propertymark. You can find more information on our website at <https://www.benham.com/membership/>



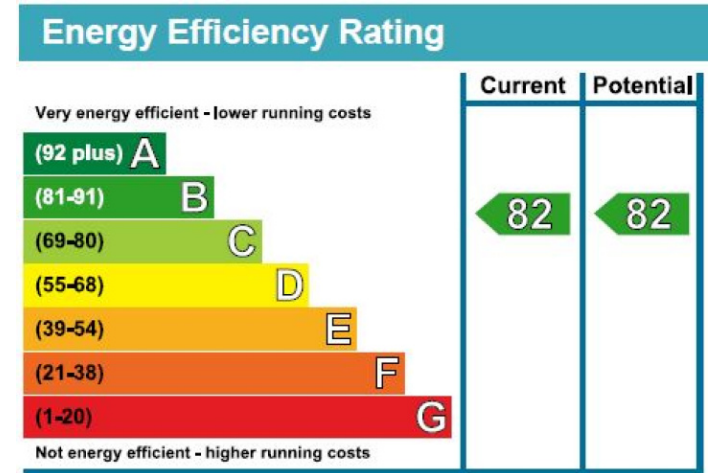
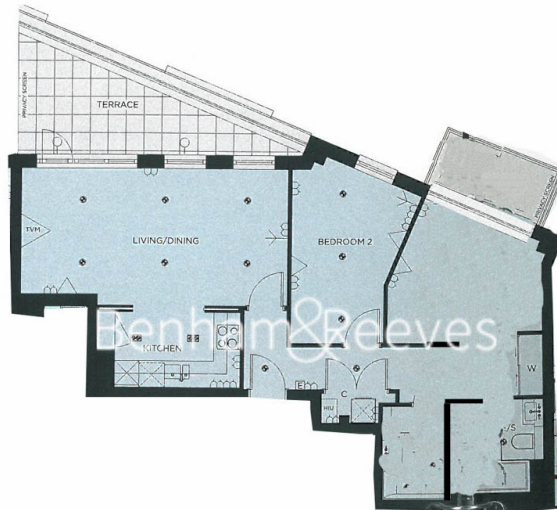
**Benham & Reeves**



# Longfield Avenue, Ealing, W5

£716 per week, £3,103 per month + fees

www.benhams.com



## London branches open six days a week Mon - Sat

Canary Wharf | City | Colindale | Dartmouth Park | Ealing | Fulham  
Hammersmith | Hampstead | Highgate | Hyde Park | Kensington | Kew  
Knightsbridge | Nine Elms | Shoreditch | Southall | Surrey Quays  
Wapping | Wembley | White City | Woolwich

## International offices

China | Hong Kong SAR | India | Indonesia | Qatar | Malaysia | Middle East | Pakistan  
Singapore | South Africa | Thailand | Turkey

