



Benham & Reeves

**Longfield Avenue, Ealing, W5**

£508 per week, £2,201 per month + fees

 1 Bedroom    1 Bathroom    Furnished

A stylish 2nd floor apartment situated in a popular development, with gym and swimming pool, in Ealing, a brief walk from Ealing Broadway Underground Station.

Please [click here](#) for full detail

## Property features

**1 Bedroom | 1 Bathroom | Reception | Furnished | Fitted Kitchen | EPC-B | Swimming pool & gym | 24 Hour Concierge | Nearby Ealing Broadway Station**

For more information about this property, please call our Ealing branch on

**020 8280 0140**

Redress & Client Money Protection :

Benham and Reeves are members of The Property Ombudsman redress scheme and have Client Money protection with ARLA Propertymark. You can find more information on our website at <https://www.benhams.com/membership/>



Benham & Reeves

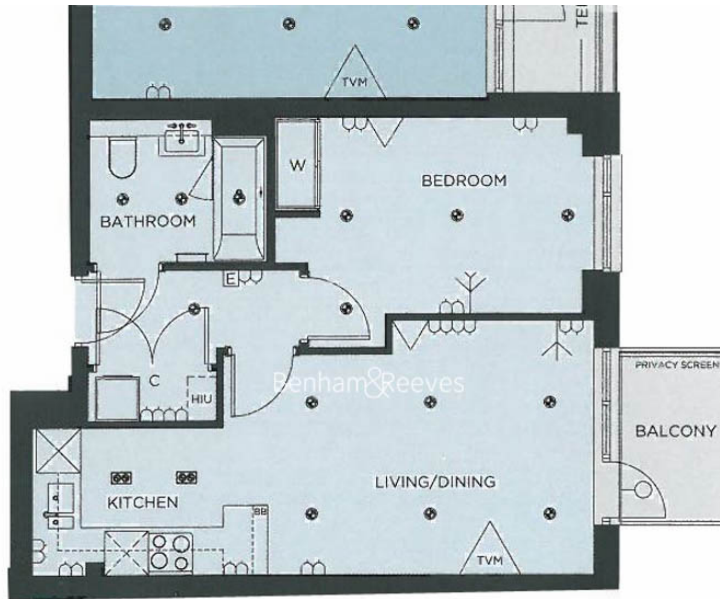




# Longfield Avenue, Ealing, W5

£508 per week, £2,201 per month + fees

www.benhams.com



## Energy Efficiency Rating

	Current	Potential
Very energy efficient - lower running costs		
(92 plus) A		
(81-91) B	82	82
(69-80) C		
(55-68) D		
(39-54) E		
(21-38) F		
(1-20) G		
Not energy efficient - higher running costs		

## London branches open six days a week Mon - Sat

Canary Wharf | City | Colindale | Dartmouth Park | Ealing | Fulham  
Hammersmith | Hampstead | Highgate | Hyde Park | Kensington | Kew  
Knightsbridge | Nine Elms | Shoreditch | Southall | Surrey Quays  
Wapping | Wembley | White City | Woolwich

## International offices

China | Hong Kong SAR | India | Indonesia | Qatar | Malaysia | Middle East | Pakistan  
Singapore | South Africa | Thailand | Turkey

