



Benham & Reeves

Filmworks Walk, Ealing, W5

£761 per week, £3,298 per month + fees

 2 Bedrooms  2 Bathrooms  Furnished

Spacious, modern 5th floor apartment situated in an exciting development in Ealing Broadway, close to transport connections.

Please [click here](#) for full detail

Property features

Two Bedroom | Concierge | Balcony | Wood floors | Close to Fast Transport Connections | EPC-B | Floor-to-Ceiling Windows | fully fitted modern kitchen | Close to Amenities | Nearby Ealing Broadway Tube station

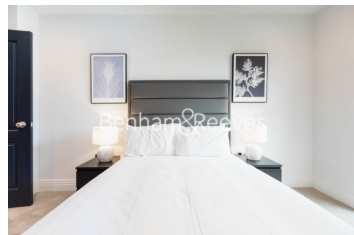
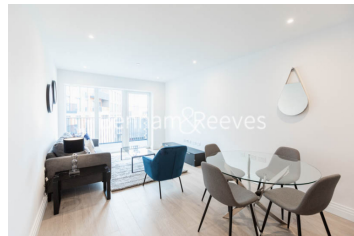
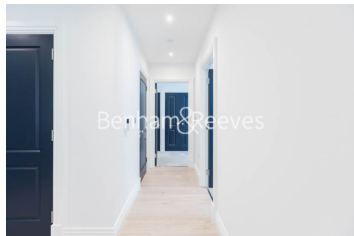
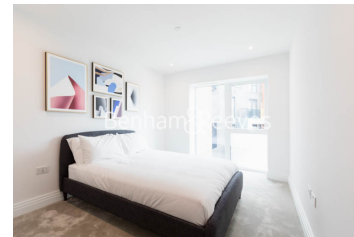
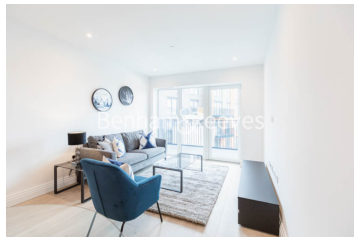
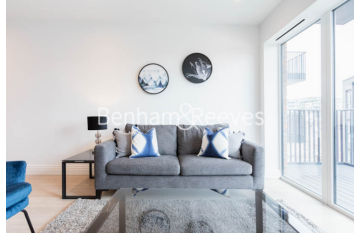
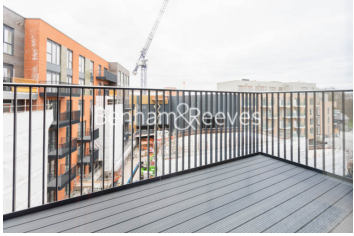
For more information about this property,
please call our Ealing branch on

020 8280 0140

Redress & Client Money Protection :
Benham and Reeves are members of The Property Ombudsman redress scheme and have Client Money protection with ARLA Propertymark.
You can find more information on our website at <https://www.benhams.com/membership/>



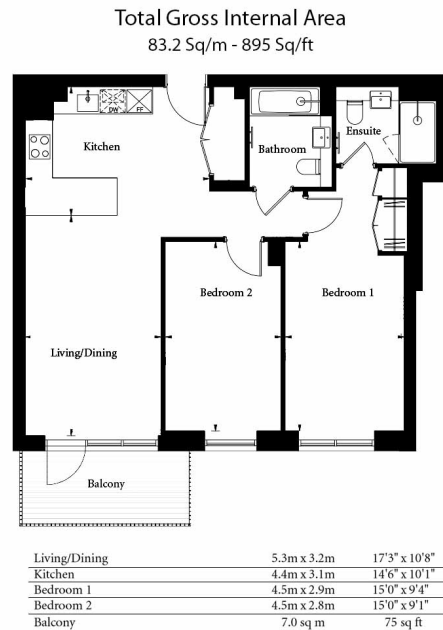
Benham & Reeves



Filmworks Walk, Ealing, W5

£761 per week, £3,298 per month + fees

www.benhams.com



Floor Plan measurements are approximate and are for illustrative purposes only. While we do not doubt the floor plans accuracy, we make no guarantee, warranty or representation as to the accuracy and completeness of the floor plan.

Score	Energy rating	Current	Potential
92+	A		
81-91	B	86 B	86 B
69-80	C		
55-68	D		
39-54	E		
21-38	F		
1-20	G		

London branches open six days a week Mon - Sat

Canary Wharf | City | Colindale | Dartmouth Park | Ealing | Fulham
Hammersmith | Hampstead | Highgate | Hyde Park | Kensington | Kew
Knightsbridge | Nine Elms | Shoreditch | Southall | Surrey Quays
Wapping | Wembley | White City | Woolwich

International offices

China | Hong Kong SAR | India | Indonesia | Qatar | Malaysia | Middle East | Pakistan
Singapore | South Africa | Thailand | Turkey



Benham & Reeves