



Benham & Reeves

Longfield Avenue, Ealing W5

£670 per week, £2,903 per month + fees

 2 Bedrooms  2 Bathrooms  Furnished

Spacious 7th floor apartment situated within a popular Ealing development ideally located close to open spaces, shops, and Ealing Broadway (Elizabeth, Circle and District lines) underground and Overground stations.

Please [click here](#) for full detail

Property features

2 Bedrooms | 2 Bathrooms | Reception | Furnished | Fitted Kitchen | EPC-B | Concierge | Gym & Swimming pool | Private Balcony | Nearby Ealing Broadway Tube Station

For more information about this property, please call our Ealing branch on

020 8280 0140

Redress & Client Money Protection :

Benham and Reeves are members of The Property Ombudsman redress scheme and have Client Money protection with ARLA Propertymark. You can find more information on our website at <https://www.benhams.com/membership/>



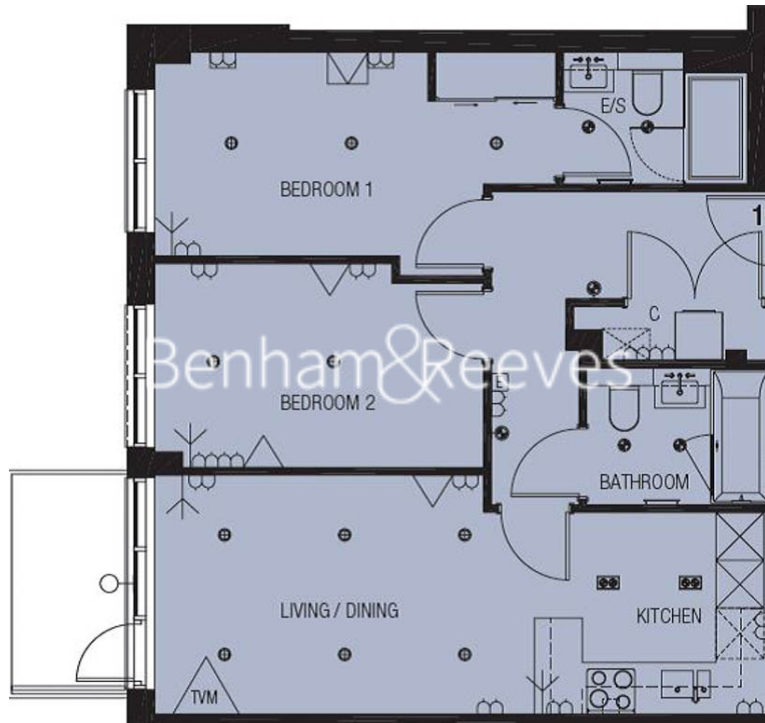
Benham & Reeves



Longfield Avenue, Ealing W5

£670 per week, £2,903 per month + fees

www.benhams.com



| Score | Energy rating | Current | Potential |
|-------|---------------|---------|-----------|
| 92+ | A | | |
| 81-91 | B | 82 B | 84 B |
| 69-80 | C | | |
| 55-68 | D | | |
| 39-54 | E | | |
| 21-38 | F | | |
| 1-20 | G | | |

London branches open six days a week Mon - Sat

Canary Wharf | City | Colindale | Dartmouth Park | Ealing | Fulham
Hammersmith | Hampstead | Highgate | Hyde Park | Kensington | Kew
Knightsbridge | Nine Elms | Shoreditch | Southall | Surrey Quays
Wapping | Wembley | White City | Woolwich

International offices

China | Hong Kong SAR | India | Indonesia | Qatar | Malaysia | Middle East | Pakistan
Singapore | South Africa | Thailand | Turkey

