



Benham & Reeves

Brentmead gardens, Ealing, NW10

£866 per week, £3,753 per month + fees

 4 Bedrooms  2 Bathrooms  Unfurnished

A beautifully presented and extended semi-detached property arranged over three floors, with a lovely 70 ft private garden and off street parking. Located close to the amenities of Ealing and Hanger Lane Station.

Please [click here](#) for full detail

Property features

4 Bedrooms | 2 Bathrooms | Through reception room | Rear extension | Fitted kitchen | EPC - C | Wood floors | Rear garden | Off street parking | Close to Hanger Lane Station

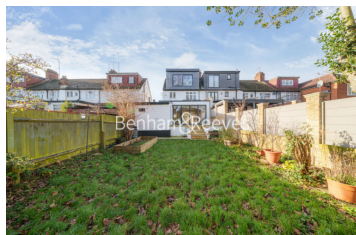
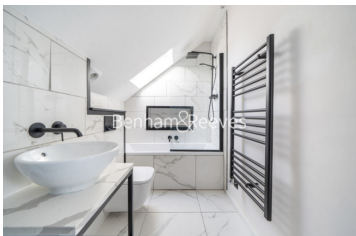
For more information about this property, please call our Ealing branch on

020 8280 0140



Redress & Client Money Protection :
Benham and Reeves are members of The Property Ombudsman redress scheme and have Client Money protection with ARLA Propertymark.
You can find more information on our website at <https://www.benhams.com/membership/>

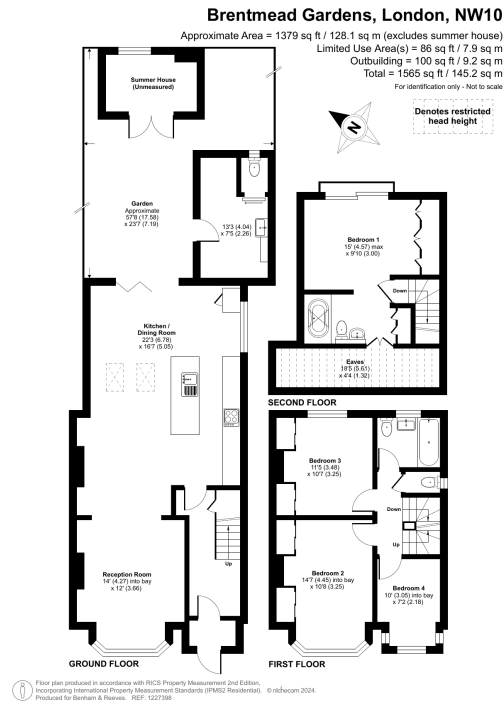
Benham & Reeves



Brentmead gardens, Ealing, NW10

£866 per week, £3,753 per month + fees

www.benhams.com



Score	Energy rating	Current	Potential
92+	A		
81-91	B		84 B
69-80	C	69 C	
55-68	D		
39-54	E		
21-38	F		
1-20	G		

London branches open six days a week Mon - Sat

Canary Wharf | City | Colindale | Dartmouth Park | Ealing | Fulham
 Hammersmith | Hampstead | Highgate | Hyde Park | Kensington | Kew
 Knightsbridge | Nine Elms | Shoreditch | Southall | Surrey Quays
 Wapping | Wembley | White City | Woolwich



International offices

China | Hong Kong SAR | India | Indonesia | Qatar | Malaysia | Middle East | Pakistan
 Singapore | South Africa | Thailand | Turkey