



Benham & Reeves

Granville Gardens, Ealing Common, W5

£647 per week, £2,804 per month + fees

 2 Bedrooms  2 Bathrooms  Furnished

A spacious 5th floor property in a modern development moments from Ealing Common underground station. The property Further benefits from underground parking.

Please [click here](#) for full detail

Property features

Underground parking | Balcony | Wood floors | Modern development | Large Open Plan Reception | EPC-C | Fully Fitted Kitchen | Floor-To-Ceiling Windows | Next to Ealing Common Station

For more information about this property,
please call our Ealing branch on

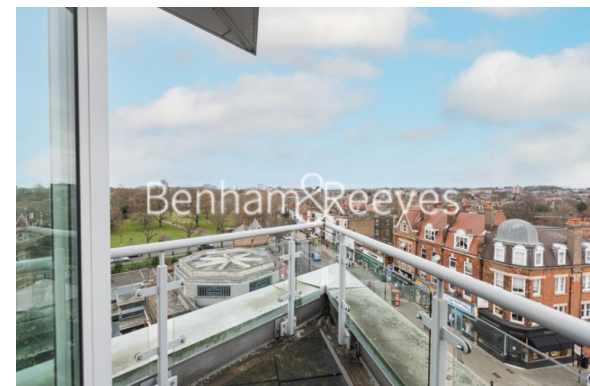
020 8280 0140

Redress & Client Money Protection :

Benham and Reeves are members of The Property Ombudsman redress scheme and have Client Money protection with ARLA Propertymark. You can find more information on our website at <https://www.benham.com/membership/>



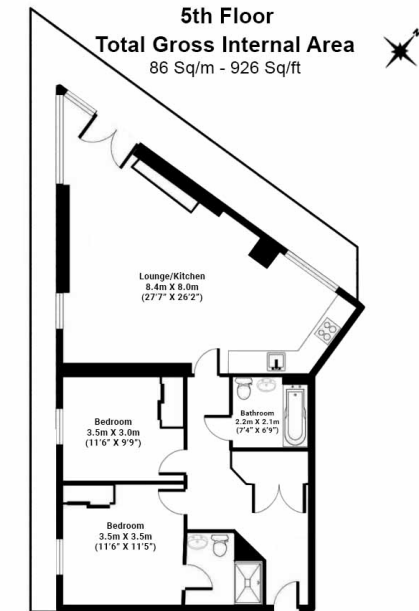
Benham&Reeves



Granville Gardens, Ealing Common, W5

£647 per week, £2,804 per month + fees

www.benhams.com



Floor Plan measurements are approximate and are for illustrative purposes only. While we do not doubt the floor plans accuracy, we make no guarantee, warranty or representation as to the accuracy and completeness of the floor plan.

Score	Energy rating	Current	Potential
92+	A		
81-91	B		
69-80	C	78 c	78 c
55-68	D		
39-54	E		
21-38	F		
1-20	G		

London branches open six days a week Mon - Sat

Canary Wharf | City | Colindale | Dartmouth Park | Ealing | Fulham
Hammersmith | Hampstead | Highgate | Hyde Park | Kensington | Kew
Knightsbridge | Nine Elms | Shoreditch | Southall | Surrey Quays
Wapping | Wembley | White City | Woolwich

International offices

China | Hong Kong SAR | India | Indonesia | Qatar | Malaysia | Middle East | Pakistan
Singapore | South Africa | Thailand | Turkey



Benham & Reeves