



Benham & Reeves

Tinniswood Close, Drayton Park, N5

£358 per week, £1,550 per month + fees

 1 Bedroom  1 Bathroom  Part-furnished

A ground floor purpose built flat with gated off-street parking situated in Tinniswood Close N5. The property is ideally located moments from Drayton Park station (overground) and the open parkland of Highbury Fields.

Please [click here](#) for full detail

Property features

Double Bedroom | Bathroom | Gated Parking | Excellent Transport Links | Kitchen | EPC-C | Reception Room | Close to amenities of Holloway Road | Drayton Park Train Station (Zone 2)

For more information about this property,
please call our Dartmouth Park branch on

020 7319 9660



Redress & Client Money Protection :
Benham and Reeves are members of The Property Ombudsman redress scheme and have Client Money protection with ARLA Propertymark.
You can find more information on our website at <https://www.benhams.com/membership/>

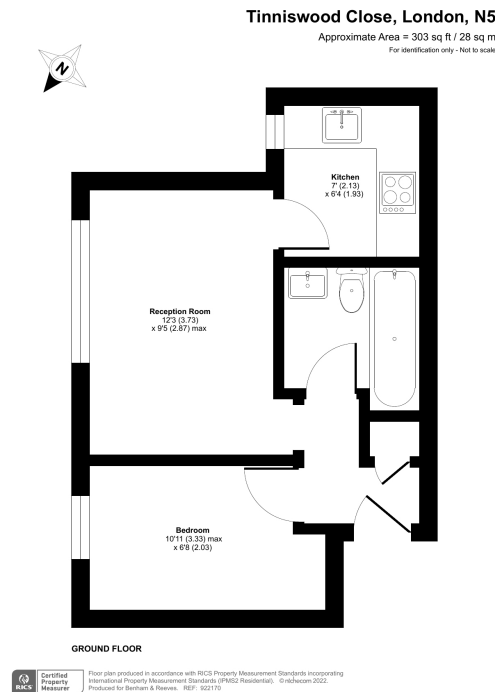
Benham & Reeves



Tinniswood Close, Drayton Park, N5

£358 per week, £1,550 per month + fees

www.benhams.com



Score	Energy rating	Current	Potential
92+	A		
81-91	B		82 B
69-80	C	70 C	
55-68	D		
39-54	E		
21-38	F		
1-20	G		

London branches open six days a week Mon - Sat

Canary Wharf | City | Colindale | Dartmouth Park | Ealing | Fulham
Hammersmith | Hampstead | Highgate | Hyde Park | Kensington | Kew
Knightsbridge | Nine Elms | Shoreditch | Southall | Surrey Quays
Wapping | Wembley | White City | Woolwich

International offices

China | Hong Kong SAR | India | Indonesia | Qatar | Malaysia | Middle East | Pakistan
Singapore | South Africa | Thailand | Turkey

