



Benham & Reeves

**Arena tower, Crossharbour Plaza, E14**

£508 per week, £2,200 per month + fees

 1 Bedroom    1 Bathroom    Furnished

A well-presented 1 bedroom duplex apartment set on the 2nd floor of this beautiful development, Arena tower, close to the amenities of Canary wharf. The property is within walking distance to Canary wharf(Jubilee Line) underground and Elizabeth line.

Please [click here](#) for full detail

## Property features

**1 Double Bedroom | Luxury Bathroom | Open plan reception | Fully Fitted Modern Kitchen | Furnished | EPC-B | 24 Hours Concierge, Secured and Gated | Communal Garden | Nearby Canary wharf station**

For more information about this property, please call our Canary Wharf branch on

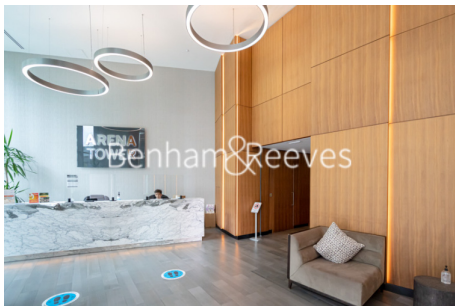
**020 8036 3200**

Redress & Client Money Protection :

Benham and Reeves are members of The Property Ombudsman redress scheme and have Client Money protection with ARLA Propertymark. You can find more information on our website at <https://www.benhams.com/membership/>



Benham & Reeves



# Arena tower, Crossharbour Plaza, E14

www.benhams.com

£508 per week, £2,200 per month + fees

Score	Energy rating	Current	Potential
92+	A		
81-91	B	81 B	81 B
69-80	C		
55-68	D		
39-54	E		
21-38	F		
1-20	G		

## London branches open six days a week Mon - Sat

Canary Wharf | City | Colindale | Dartmouth Park | Ealing | Fulham  
 Hammersmith | Hampstead | Highgate | Hyde Park | Kensington | Kew  
 Knightsbridge | Nine Elms | Shoreditch | Southall | Surrey Quays  
 Wapping | Wembley | White City | Woolwich

## International offices

China | Hong Kong SAR | India | Indonesia | Qatar | Malaysia | Middle East | Pakistan  
 Singapore | South Africa | Thailand | Turkey

