



Benham & Reeves

Henrietta Steet, Covent Garden, WC2E

£2,192 per week, £9,500 per month + fees

 3 Bedrooms  3 Bathrooms  Furnished

A rare exceptional three-bedroom apartment with three en-suite bathrooms and a stunning south facing garden terrace located on one of the premier streets adjoining Covent Garden's iconic Piazza.

Please [click here](#) for full detail

Property features

Large split level three-bedroom apartment | Three en-suite bathrooms and guest WC | Large Victorian living room | Fitted Kitchen with dining area | Exceptionally furnished | EPC-C | South-facing landscaped terrace | Excellent Location | Holborn Station Nearby

For more information about this property, please call our City branch on

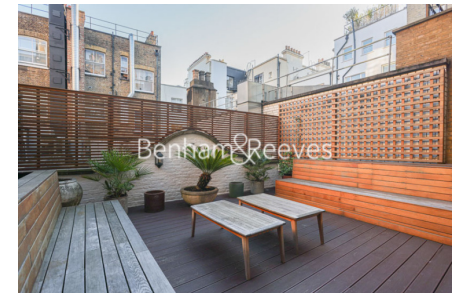
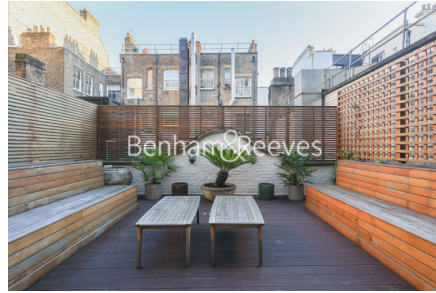
020 7213 9700

Redress & Client Money Protection :

Benham and Reeves are members of The Property Ombudsman redress scheme and have Client Money protection with ARLA Propertymark. You can find more information on our website at <https://www.benhams.com/membership/>



Benham & Reeves

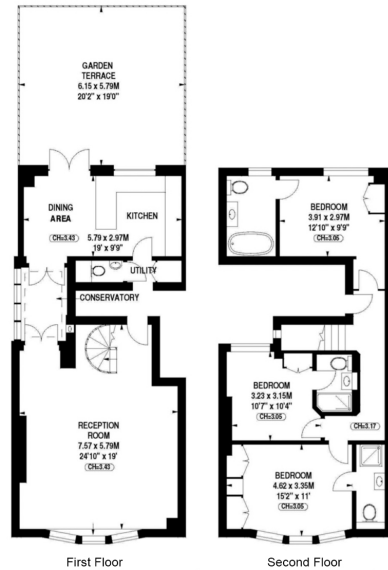


Henrietta Steet, Covent Garden, WC2E

£2,192 per week, £9,500 per month + fees

www.benhams.com

Total Gross Internal Area
133 Sq/m - 1,432 Sq/ft



Floor Plan measurements are approximate and are for illustrative purposes only. While we do not doubt the floor plans accuracy, we make no guarantee, warranty or representation as to the accuracy and completeness of the floor plan.

Score	Energy rating	Current	Potential
92+	A		
81-91	B		83 B
69-80	C	76 C	
55-68	D		
39-54	E		
21-38	F		
1-20	G		

London branches open six days a week Mon - Sat

Canary Wharf | City | Colindale | Dartmouth Park | Ealing | Fulham
Hammersmith | Hampstead | Highgate | Hyde Park | Kensington | Kew
Knightsbridge | Nine Elms | Shoreditch | Southall | Surrey Quays
Wapping | Wembley | White City | Woolwich

International offices

China | Hong Kong SAR | India | Indonesia | Qatar | Malaysia | Middle East | Pakistan
Singapore | South Africa | Thailand | Turkey

