



Benham & Reeves

Tanner Close, Colindale, NW9

£370 per week, £1,603 per month + fees

 1 Bedroom  1 Bathroom  Furnished

Contemporary 3rd floor apartment, with secure allocated parking space, situated in a sought-after development in North West London. Located a short walk (0.2 miles) from Colindale Underground Station (Northern Line) EPC – B

****MORE PROPERTIES TO OFFER****

Please [click here](#) for full detail

Property features

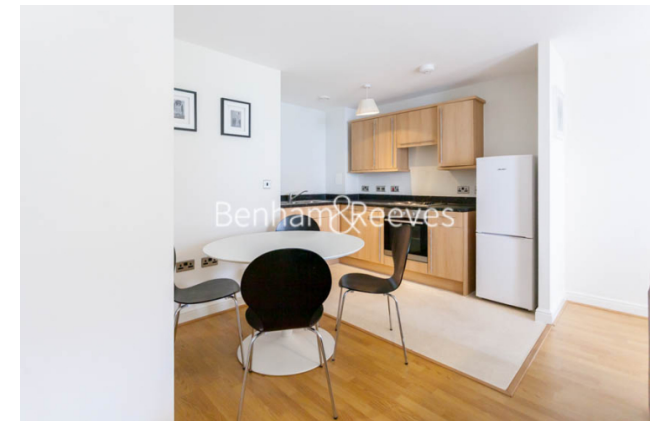
Selection of Amenities On-site | Well Tended Communal Gardens | Open Parkland | Tastefully Furnished | Situated within The Pulse, Colindale NW9 | EPC-B | Available to rent from the May 2024 | Allocated Underground Parking | 24 Hours Underground Service at the week end | 0.2 miles to Colindale Underground Station

For more information about this property,
please call our Colindale branch on

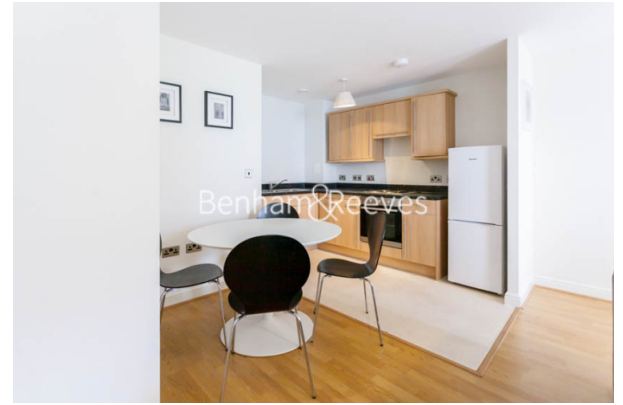
020 8732 7980

Redress & Client Money Protection :

Benham and Reeves are members of The Property Ombudsman redress scheme and have Client Money protection with ARLA Propertymark. You can find more information on our website at <https://www.benhams.com/membership/>



Benham & Reeves

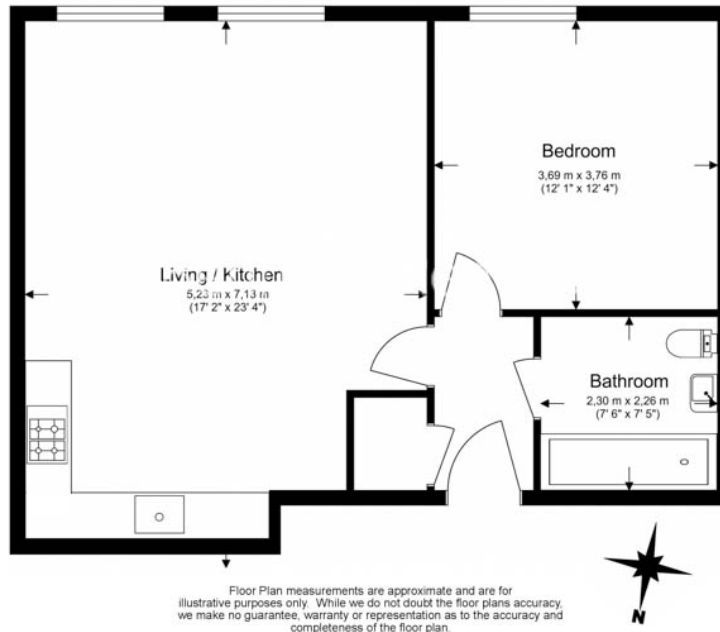


Tanner Close, Colindale, NW9

£370 per week, £1,603 per month + fees

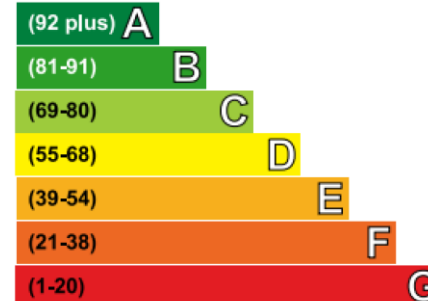
www.benhams.com

Total Gross Internal Area
57.2 Sq/m - 615 Sq/ft



Energy Efficiency Rating

Very energy efficient - lower running costs



	Current	Potential
Very energy efficient - lower running costs		
(92 plus) A		
(81-91) B	84	84
(69-80) C		
(55-68) D		
(39-54) E		
(21-38) F		
(1-20) G		
Not energy efficient - higher running costs		

London branches open six days a week Mon - Sat

Canary Wharf | City | Colindale | Dartmouth Park | Ealing | Fulham
Hammersmith | Hampstead | Highgate | Hyde Park | Kensington | Kew
Knightsbridge | Nine Elms | Shoreditch | Southall | Surrey Quays
Wapping | Wembley | White City | Woolwich

International offices

China | Hong Kong SAR | India | Indonesia | Qatar | Malaysia | Middle East | Pakistan
Singapore | South Africa | Thailand | Turkey

