



Benham & Reeves

Beaufort Park, Colindale, NW9

£392 per week, £1,700 per month + fees

🛏 1 Bedroom 🚿 1 Bathroom 🛋 Furnished

Contemporary 6th floor apartment with secure underground parking and good resident amenities situated in a desirable development in North West London. Located within walking distance of Colindale Underground Station (Northern Line). EPC-C

Please [click here](#) for full detail

Property features

Selection of Amenities On-site | Well Tended Communal Gardens | Private Balcony | Furnished | Fitted Kitchen | EPC-C | Situated within Beaufort Park, Colindale NW9 | 24 Hour Concierge | Secure Underground Unallocated Parking | Nearby Colindale Underground Station

For more information about this property,
please call our Colindale branch on

020 8732 7980

Redress & Client Money Protection :

Benham and Reeves are members of The Property Ombudsman redress scheme and have Client Money protection with ARLA Propertymark. You can find more information on our website at <https://www.benhams.com/membership/>



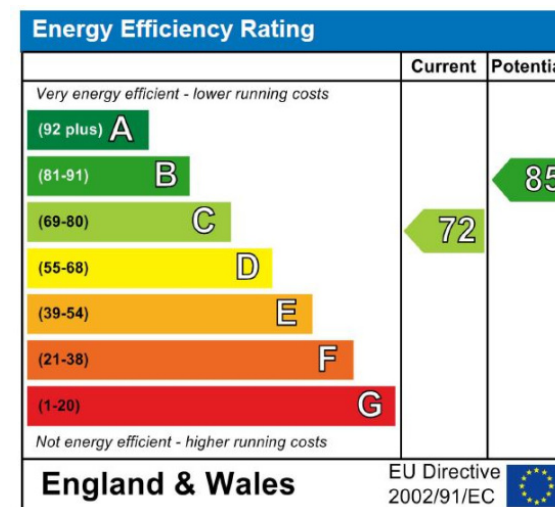
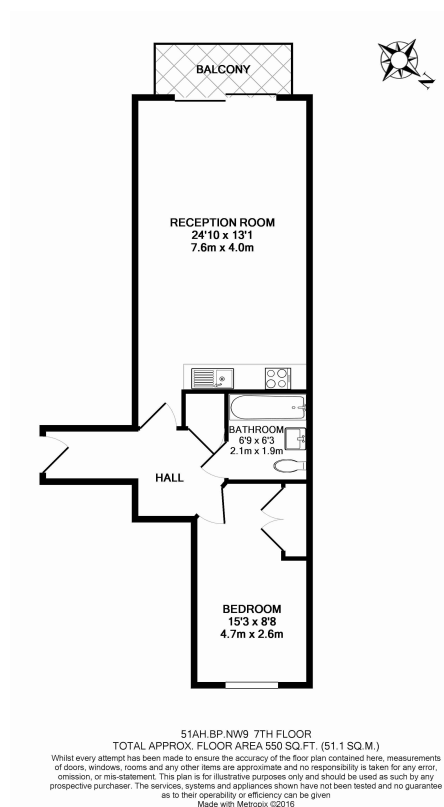
Benham&Reeves



Beaufort Park, Colindale, NW9

£392 per week, £1,700 per month + fees

www.benhams.com



London branches open six days a week Mon - Sat

Canary Wharf | City | Colindale | Dartmouth Park | Ealing | Fulham
Hammersmith | Hampstead | Highgate | Hyde Park | Kensington | Kew
Knightsbridge | Nine Elms | Shoreditch | Southall | Surrey Quays
Wapping | Wembley | White City | Woolwich

International offices

China | Hong Kong SAR | India | Indonesia | Qatar | Malaysia | Middle East | Pakistan
Singapore | South Africa | Thailand | Turkey



Benham & Reeves