



Benham & Reeves

East Drive, Colindale, NW9

£519 per week, £2,250 per month + fees

 2 Bedrooms  2 Bathrooms  Furnished

****ON SITE AGENT****

Tastefully furnished 2nd floor apartment, with underground parking a good security, situated within a desirable development in North West London. Conveniently positioned 0.4 miles from Colindale Underground Station (Northern Line).

Please [click here](#) for full detail

Property features

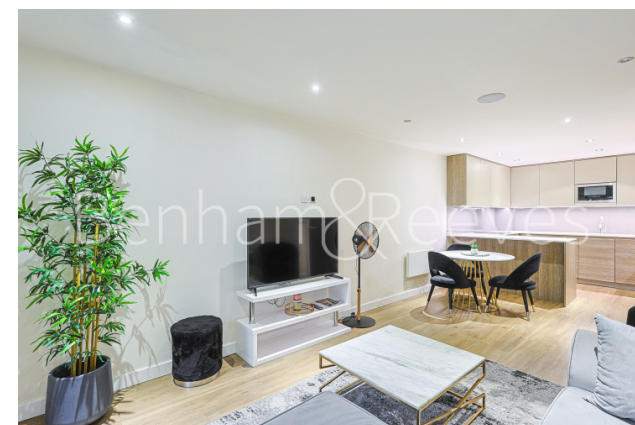
Selection of Amenities On-site | Well Tended Communal Gardens | Private Balcony | Furnished | Situated within Beaufort Park, Colindale NW9 | EPC-C | Available to rent immediately | 24 Hour Estate Management | Secure Underground Unallocated Parking | 0.4 miles to Colindale Underground Station

For more information about this property, please call our Colindale branch on

020 8732 7980

Redress & Client Money Protection :

Benham and Reeves are members of The Property Ombudsman redress scheme and have Client Money protection with ARLA Propertymark. You can find more information on our website at <https://www.benhams.com/membership/>



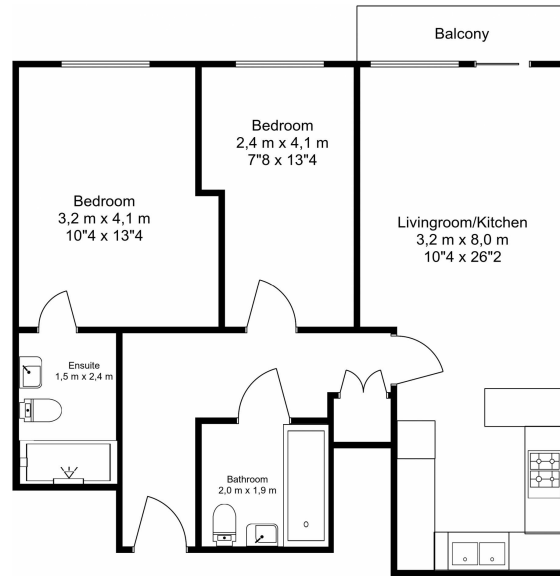
Benham & Reeves



East Drive, Colindale, NW9

£519 per week, £2,250 per month + fees

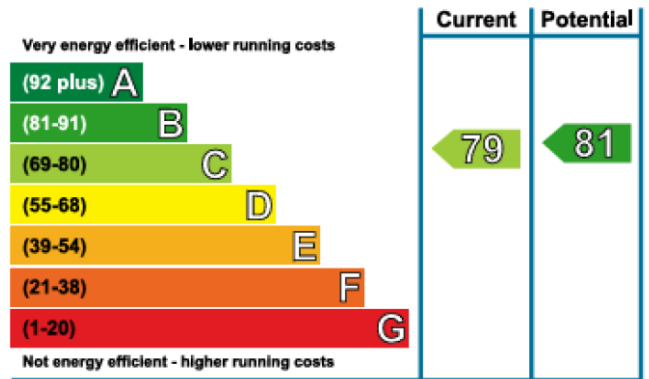
www.benhams.com



Total Area - 743 sq.ft - 69.1 sq.m

Floor Plan measurements are approximate and are for illustrative purposes only. While we do not doubt the floor plans accuracy, we make no guarantee, warranty or representation as to the accuracy and completeness of the floor plan.

Energy Efficiency Rating



London branches open six days a week Mon - Sat

Canary Wharf | City | Colindale | Dartmouth Park | Ealing | Fulham
Hammersmith | Hampstead | Highgate | Hyde Park | Kensington | Kew
Knightsbridge | Nine Elms | Shoreditch | Southall | Surrey Quays
Wapping | Wembley | White City | Woolwich

International offices

China | Hong Kong SAR | India | Indonesia | Qatar | Malaysia | Middle East | Pakistan
Singapore | South Africa | Thailand | Turkey

