



Benham & Reeves

Beaufort Square, Colindale, NW9

£531 per week, £2,300 per month + fees

 2 Bedrooms  2 Bathrooms  Furnished

A MODERN apartment offering an OPEN PLAN living area with a FULLY FITTED KITCHEN leading onto a PRIVATE BALCONY as well as TWO DOUBLE BEDROOMS and BATHROOMS, FREE RESIDENTS GYM & SPA (FREE) and much more...

The property is also situated 0.4 miles to COLINDALE UNDERGROUND STATION (Northern Line).

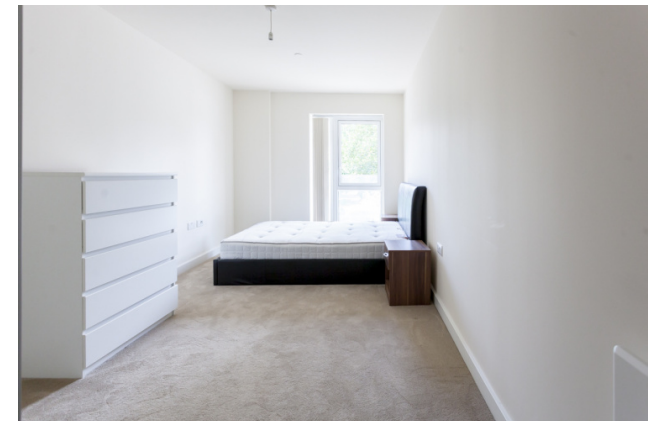
Please [click here](#) for full detail

Property features

Selection of Amenities On-site | Well Tended Communal Gardens | Private Balcony | Brand New Apartment | Situated within Beaufort Park, Colindale NW9 | EPC-C | Available to rent from the middle of August 2019 | Water Rates Included | Fee Gym, Swimming Pool, Spa and Jacuzzi | 0.4 miles to Colindale Underground Station

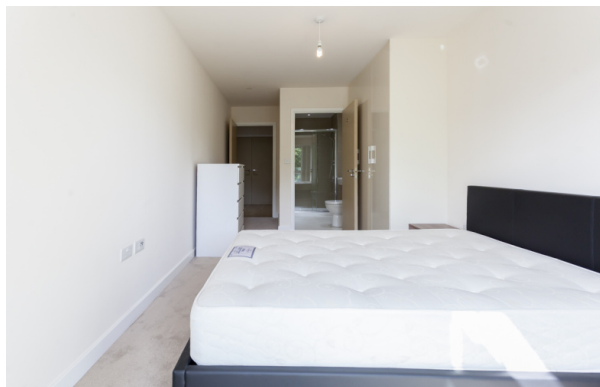
For more information about this property, please call our Colindale branch on

020 8732 7980



Redress & Client Money Protection :
Benham and Reeves are members of The Property Ombudsman redress scheme and have Client Money protection with ARLA Propertymark.
You can find more information on our website at <https://www.benhams.com/membership/>

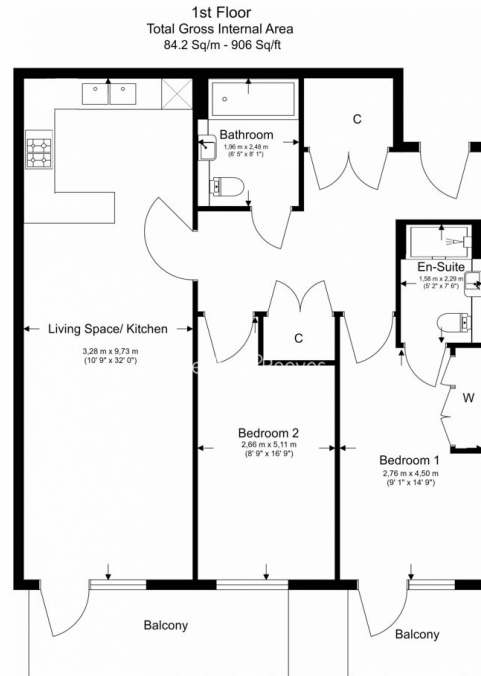
Benham & Reeves



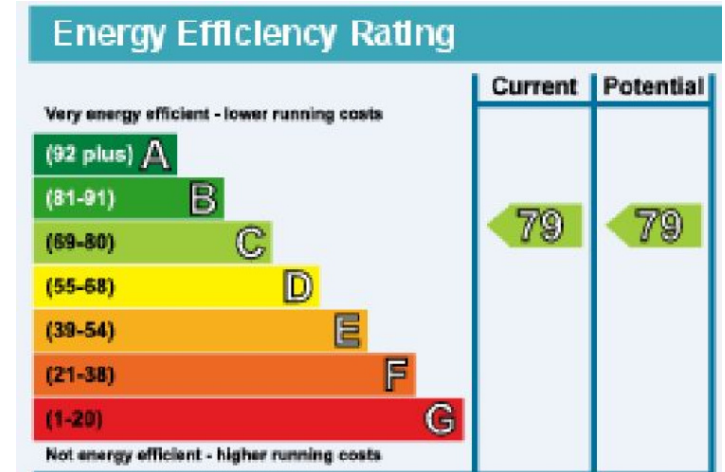
Beaufort Square, Colindale, NW9

£531 per week, £2,300 per month + fees

www.benhams.com



Floor Plan measurements are approximate and are for illustrative purposes only. While we do not doubt the floor plans accuracy, we make no guarantee, warranty or representation as to the accuracy and completeness of the floor plan.



London branches open six days a week Mon - Sat

Canary Wharf | City | Colindale | Dartmouth Park | Ealing | Fulham
Hammersmith | Hampstead | Highgate | Hyde Park | Kensington | Kew
Knightsbridge | Nine Elms | Shoreditch | Southall | Surrey Quays
Wapping | Wembley | White City | Woolwich

International offices

China | Hong Kong SAR | India | Indonesia | Qatar | Malaysia | Middle East | Pakistan
Singapore | South Africa | Thailand | Turkey

