



Benham & Reeves

## Beaufort Square, Colindale, NW9

£369 per week, £1,600 per month + fees

 1 Bedroom    1 Bathroom    Furnished

Fashionable spacious fifth floor apartment with excellent onsite amenities located in Colindale. Ideally located 0.4 miles from Colindale Underground Station (Northern Line)

Please [click here](#) for full detail

## Property features

**Selection of Amenities On-site | Well Tended Communal Gardens | Private Balcony | Tastefully Furnished | Situated within Beaufort Park, Colindale NW9 | EPC-C | 24 Hour Estate Management | Water Rates Included | Fee Gym, Swimming Pool, Spa and Jacuzzi | 0.4 miles to Colindale Underground Station**

For more information about this property,  
please call our Colindale branch on

**020 8732 7980**

Redress & Client Money Protection :

Benham and Reeves are members of The Property Ombudsman redress scheme and have Client Money protection with ARLA Propertymark. You can find more information on our website at <https://www.benhamandreeves.com/membership/>



Benham & Reeves

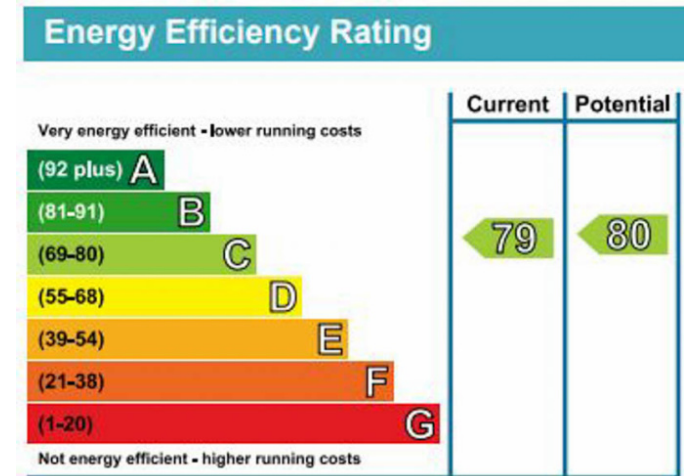
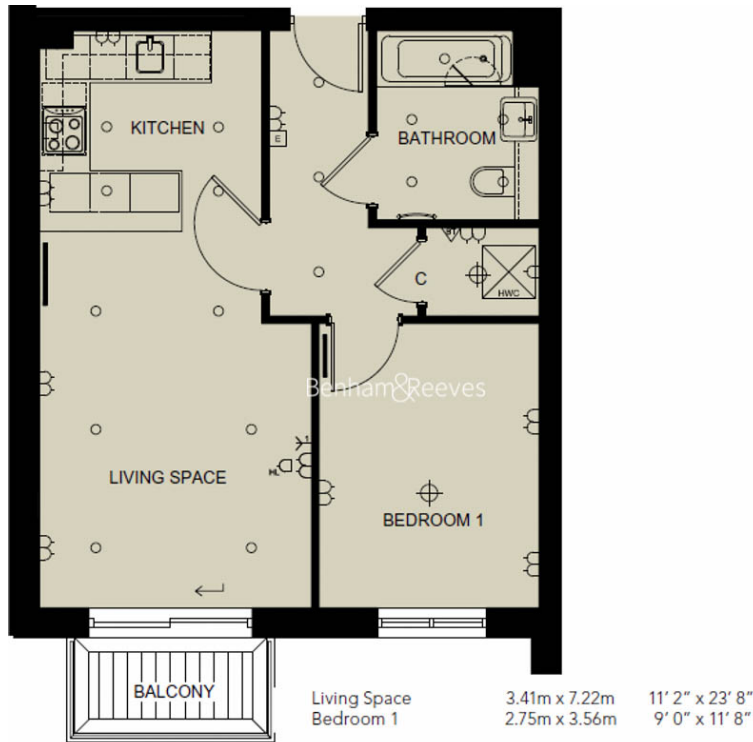




# Beaufort Square, Colindale, NW9

£369 per week, £1,600 per month + fees

www.benhams.com



## London branches open six days a week Mon - Sat

Canary Wharf | City | Colindale | Dartmouth Park | Ealing | Fulham  
 Hammersmith | Hampstead | Highgate | Hyde Park | Kensington | Kew  
 Knightsbridge | Nine Elms | Shoreditch | Southall | Surrey Quays  
 Wapping | Wembley | White City | Woolwich



## International offices

China | Hong Kong SAR | India | Indonesia | Qatar | Malaysia | Middle East | Pakistan  
 Singapore | South Africa | Thailand | Turkey