



Benham & Reeves

Boulevard Drive, Colindale, NW9

£369 per week, £1,599 per month + fees

 1 Bedroom  1 Bathroom  Furnished

Trendy fourth floor Manhattan style apartment with secure parking and onsite amenities located in the desirable development of Beaufort Park in North West London. Ideally located approximately 0.4 miles from Colindale Underground Station (Northern Line).

Please [click here](#) for full detail

Property features

Selection of Amenities On-site | Well Tended Communal Gardens | Private Balcony | Tastefully Furnished | Situated within Beaufort Park, Colindale NW9 | EPC-C | 24 Hour Estate Management | Secure Underground Unallocated Parking | Fee Gym, Swimming Pool, Spa and Jacuzzi | 0.4 miles to Colindale Underground Station

For more information about this property,
please call our Colindale branch on

020 8732 7980

Redress & Client Money Protection :

Benham and Reeves are members of The Property Ombudsman redress scheme and have Client Money protection with ARLA Propertymark. You can find more information on our website at <https://www.benhams.com/membership/>



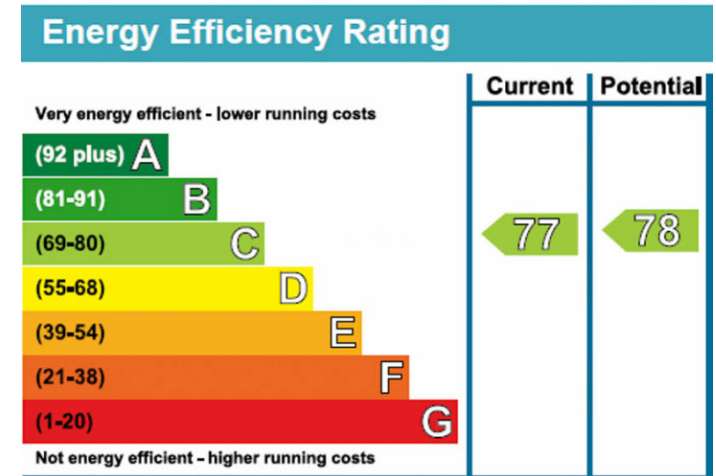
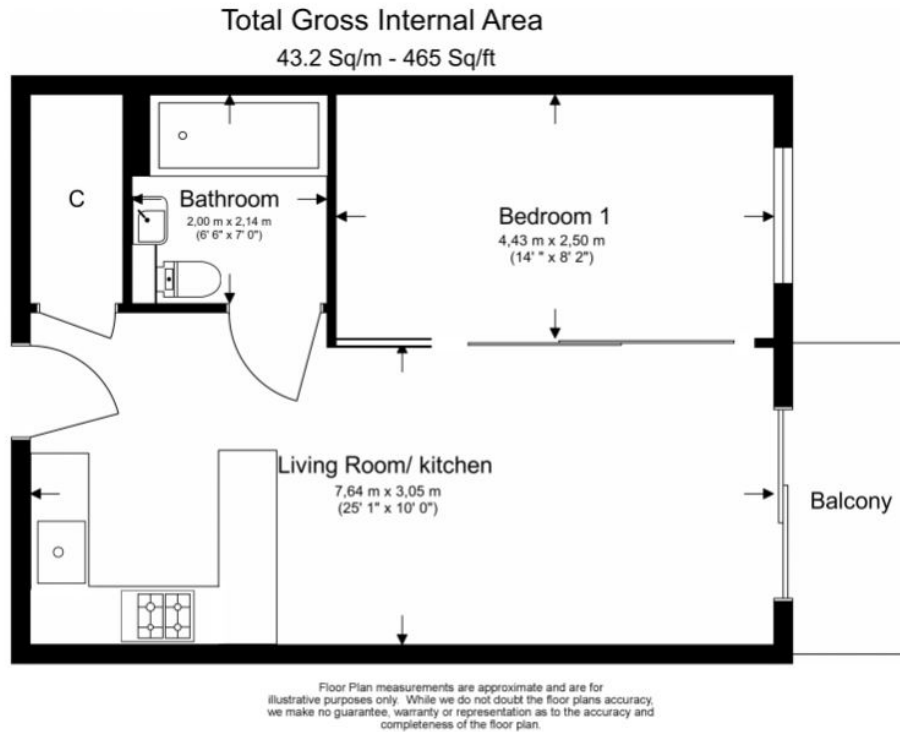
Benham & Reeves



Boulevard Drive, Colindale, NW9

£369 per week, £1,599 per month + fees

www.benhams.com



London branches open six days a week Mon - Sat

Canary Wharf | City | Colindale | Dartmouth Park | Ealing | Fulham
Hammersmith | Hampstead | Highgate | Hyde Park | Kensington | Kew
Knightsbridge | Nine Elms | Shoreditch | Southall | Surrey Quays
Wapping | Wembley | White City | Woolwich

International offices

China | Hong Kong SAR | India | Indonesia | Qatar | Malaysia | Middle East | Pakistan
Singapore | South Africa | Thailand | Turkey

