



Benham & Reeves

Boulevard Drive, Colindale, NW9

£738 per week, £3,200 per month + fees

 3 Bedrooms  2 Bathrooms  Furnished

STUNNING apartment offering a SPACIOUS open plan living area with a FULLY FITTED KITCHEN, 3 DOUBLE BEDROOMS, two bathrooms as well as an LARGE TERRACE and SECURE UNDERGROUND PARKING.

The property is also situated 0.4 miles to Colindale underground station (Northern Line)

Please [click here](#) for full detail

Property features

Selection of Amenities On-site | Sky and Internet Included | Private Balcony | Tastefully Furnished | Situated within Beaufort Park, Colindale NW9 | EPC-D | 24 Hour Estate Management | Secure Underground Unallocated Parking | Fee Gym, Swimming Pool, Spa and Jacuzzi | 0.4 miles to Colindale Underground Station

For more information about this property, please call our Colindale branch on

020 8732 7980

Redress & Client Money Protection :

Benham and Reeves are members of The Property Ombudsman redress scheme and have Client Money protection with ARLA Propertymark. You can find more information on our website at <https://www.benhams.com/membership/>



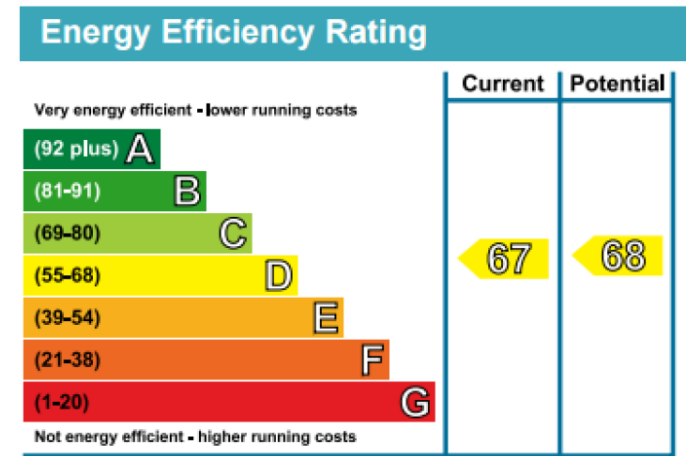
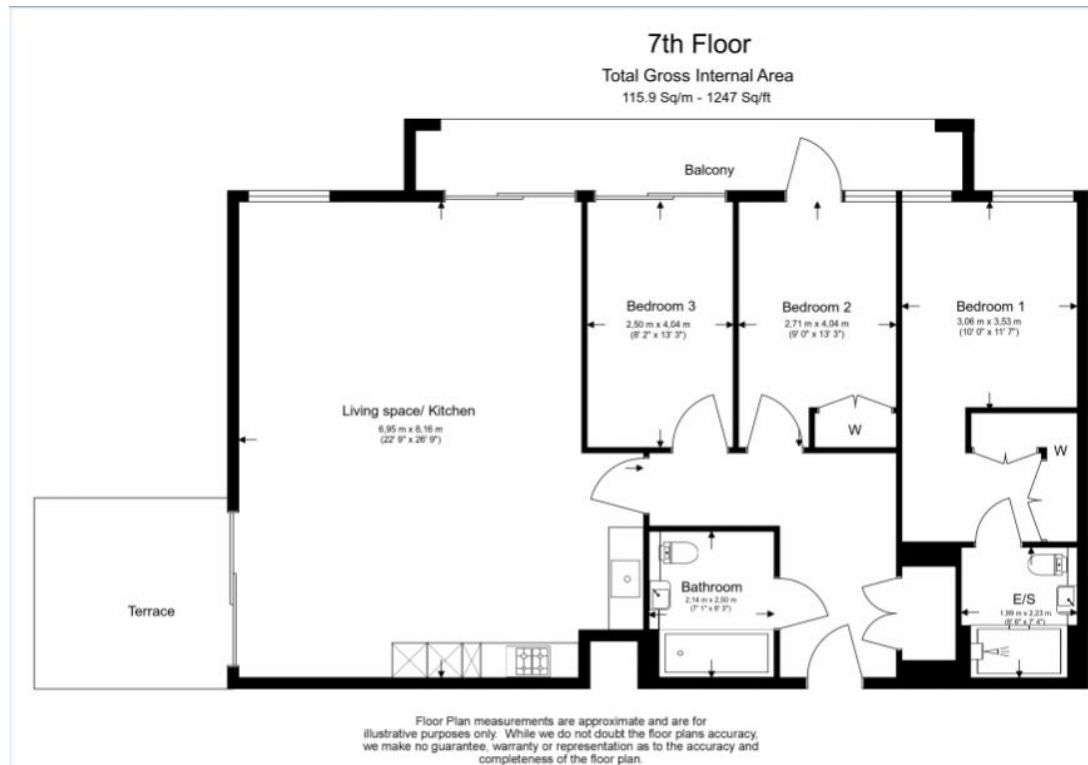
Benham & Reeves



Boulevard Drive, Colindale, NW9

£738 per week, £3,200 per month + fees

www.benhams.com



London branches open six days a week Mon - Sat

Canary Wharf | City | Colindale | Dartmouth Park | Ealing | Fulham
Hammersmith | Hampstead | Highgate | Hyde Park | Kensington | Kew
Knightsbridge | Nine Elms | Shoreditch | Southall | Surrey Quays
Wapping | Wembley | White City | Woolwich



International offices

China | Hong Kong SAR | India | Indonesia | Israel | Malaysia | Middle East | Pakistan
Qatar | Singapore | South Africa | Thailand | Turkey