



Benham & Reeves

Boulevard Drive, Colindale, NW9

£369 per week, £1,600 per month + fees

 1 Bedroom  1 Bathroom  Furnished

Bright and spacious 5th floor apartment with secure underground parking situated in a popular development in North West London. Ideally located a short walk from Colindale Underground Station (Northern Line).

Please [click here](#) for full detail

Property features

Selection of Amenities On-site | Well Tended Communal Gardens | Private Balcony | Tastefully Furnished | Situated within Beaufort Park, Colindale NW9 | EPC-D | 24 Hour Estate Management | Secure Underground Unallocated Parking | Fee Gym, Swimming Pool, Spa and Jacuzzi | 0.4 miles to Colindale Underground Station

For more information about this property,
please call our Colindale branch on

020 8732 7980

Redress & Client Money Protection :

Benham and Reeves are members of The Property Ombudsman redress scheme and have Client Money protection with ARLA Propertymark. You can find more information on our website at <https://www.benhams.com/membership/>



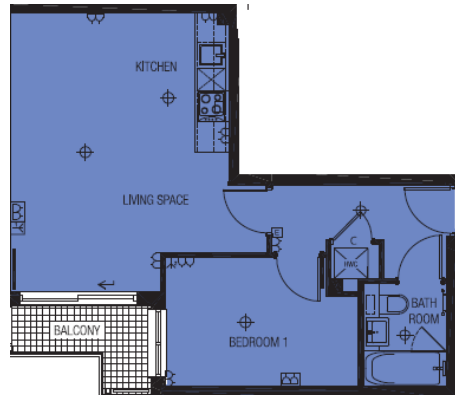
Benham & Reeves




Boulevard Drive, Colindale, NW9

£369 per week, £1,600 per month + fees

www.benhams.com



Living Space 5.42m x 4.24m 17'9" x 14'0"
 Bedroom 1 3.77m x 2.50m 12'4" x 8'2"

Energy Efficiency Rating		
	Current	Potential
<i>Very energy efficient - lower running costs</i>		
(92 plus) A		
(81-91) B		84
(69-80) C		
(55-68) D	62	
(39-54) E		
(21-38) F		
(1-20) G		
<i>Not energy efficient - higher running costs</i>		
England & Wales	EU Directive 2002/91/EC 	

London branches open six days a week Mon - Sat

Canary Wharf | City | Colindale | Dartmouth Park | Ealing | Fulham
 Hammersmith | Hampstead | Highgate | Hyde Park | Kensington | Kew
 Knightsbridge | Nine Elms | Shoreditch | Southall | Surrey Quays
 Wapping | Wembley | White City | Woolwich

International offices

China | Hong Kong SAR | India | Indonesia | Qatar | Malaysia | Middle East | Pakistan
 Singapore | South Africa | Thailand | Turkey

