



Benham & Reeves

Beaufort Square, Colindale, NW9

£508 per week, £2,201 per month + fees

 2 Bedrooms  2 Bathrooms  Furnished

A spacious apartment, with onsite security situated within North West London's finest development by St George, boasting an array of residents' facilities, including secure underground parking. It is a short walk to Colindale station (Northern line) providing access to central London in 30 minutes.

Please [click here](#) for full detail

Property features

2 Bedrooms | 2 Bathrooms | Reception | Furnished | Fitted Kitchen | EPC-C | Secure Underground Parking | Gym, Swimming Pool, Spa and Jacuzzi | Nearby Colindale Tube Station

For more information about this property,
please call our Colindale branch on

020 8732 7980



Redress & Client Money Protection :
Benham and Reeves are members of The Property Ombudsman redress scheme and have Client Money protection with ARLA Propertymark.
You can find more information on our website at <https://www.benhamandreeves.com/membership/>

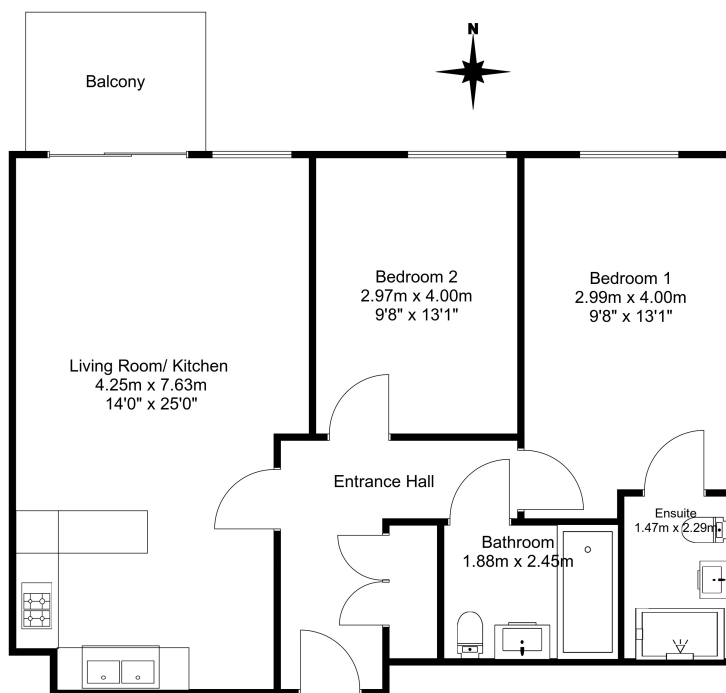
Benham & Reeves



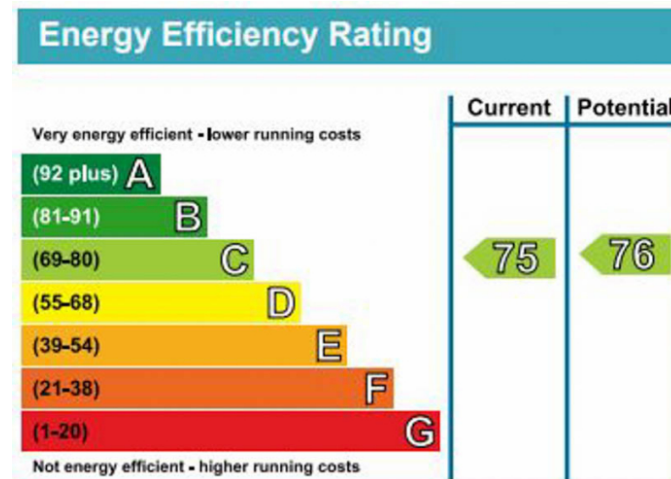
Beaufort Square, Colindale, NW9

£508 per week, £2,201 per month + fees

www.benhams.com



Total Area 76.9 SQ.M



London branches open six days a week Mon - Sat

Canary Wharf | City | Colindale | Dartmouth Park | Ealing | Fulham
Hammersmith | Hampstead | Highgate | Hyde Park | Kensington | Kew
Knightsbridge | Nine Elms | Shoreditch | Southall | Surrey Quays
Wapping | Wembley | White City | Woolwich

International offices

China | Hong Kong SAR | India | Indonesia | Qatar | Malaysia | Middle East | Pakistan
Singapore | South Africa | Thailand | Turkey



Benham & Reeves