



Benham & Reeves

Beaufort Park, Colindale, NW9

£554 per week, £2,401 per month + fees

 2 Bedrooms  2 Bathrooms  Furnished

Stylish, bright, and airy apartment offering underground parking (direct access from the building) and excellent resident amenities situated in a desirable development in North West London. Ideally located a short walk (0.4 miles) from Colindale Underground Station (Northern Line). EPC -C

Please [click here](#) for full detail

Property features

Selection of Amenities On-site | Overlooking the beautiful landscaped Courtyard | Private Balcony | Tastefully Furnished | Situated within Beaufort Park, Colindale NW9 | EPC-C | 24 Hour Estate Management | Secure Underground Unallocated Parking | Free Gym, Swimming Pool, Spa and Jacuzzi | 0.4 miles to Colindale Underground Station

For more information about this property, please call our Colindale branch on

020 8732 7980

Redress & Client Money Protection :

Benham and Reeves are members of The Property Ombudsman redress scheme and have Client Money protection with ARLA Propertymark. You can find more information on our website at <https://www.benhams.com/membership/>



Benham & Reeves

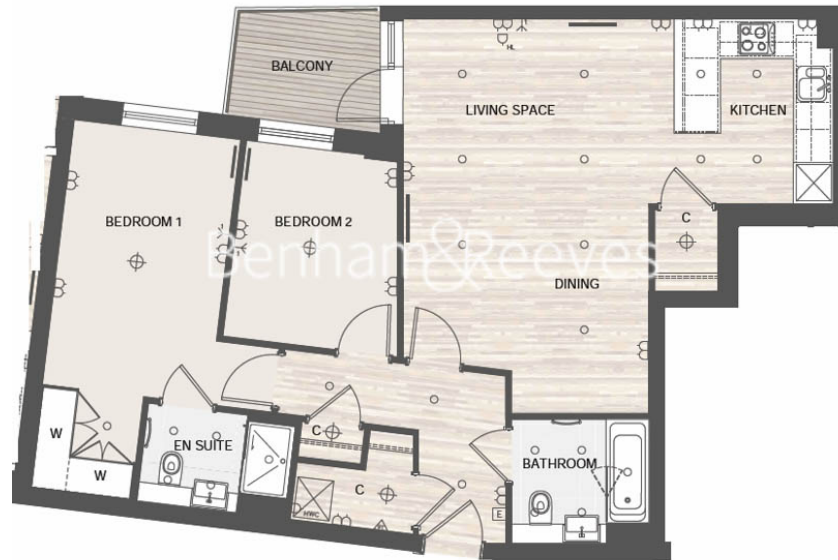


Beaufort Park, Colindale, NW9

£554 per week, £2,401 per month + fees

www.benhams.com

| | | |
|--------------|----------------|-----------------|
| Living Space | 7.06m x 6.48m | 23' 2" x 21' 3" |
| Bedroom 1 | 5.50m x 2.75m | 18' 0" x 9' 0" |
| Bedroom 2 | 3.24m x 2.88m* | 10' 7" x 9' 6"* |



| Score | Energy rating | Current | Potential |
|-------|---------------|---------|-----------|
| 92+ | A | | |
| 81-91 | B | | |
| 69-80 | C | | |
| 55-68 | D | 65 D | 65 D |
| 39-54 | E | | |
| 21-38 | F | | |
| 1-20 | G | | |

London branches open six days a week Mon - Sat

Canary Wharf | City | Colindale | Dartmouth Park | Ealing | Fulham
 Hammersmith | Hampstead | Highgate | Hyde Park | Kensington | Kew
 Knightsbridge | Nine Elms | Shoreditch | Southall | Surrey Quays
 Wapping | Wembley | White City | Woolwich

International offices

China | Hong Kong SAR | India | Indonesia | Qatar | Malaysia | Middle East | Pakistan
 Singapore | South Africa | Thailand | Turkey

