



Benham & Reeves

Heritage Avenue, Colindale, NW9

£370 per week, £1,603 per month + fees

 1 Bedroom  1 Bathroom  Furnished

****ON SITE AGENT****

Contemporary 3rd floor apartment situated in a desirable development in North West London with excellent facilities onsite. An ideal 5-minute walk (0.4 miles) from Colindale underground station (Northern line). EPC-B

****MORE PROPERTIES TO OFFER****

Please [click here](#) for full detail

Property features

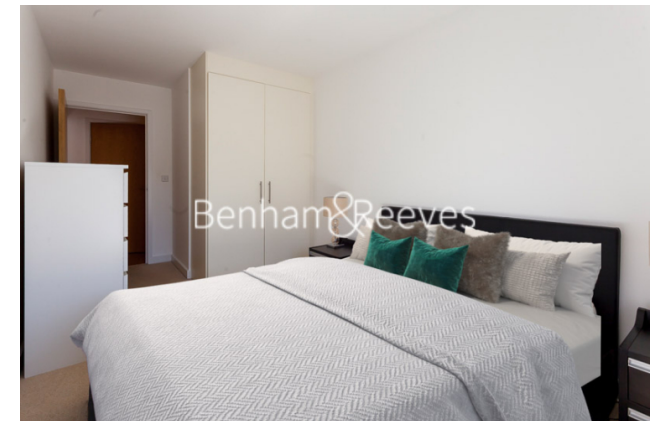
Selection of Amenities On-site | Well Tended Communal Gardens | Private Balcony | Tastefully Furnished | Situated within Beaufort Park, Colindale NW9 | EPC-C | 24 Hour Estate Management | Water rates included | Free resident's gym, swimming pool, spa and jacuzzi | 0.4 miles to Colindale Underground Station

For more information about this property, please call our Colindale branch on

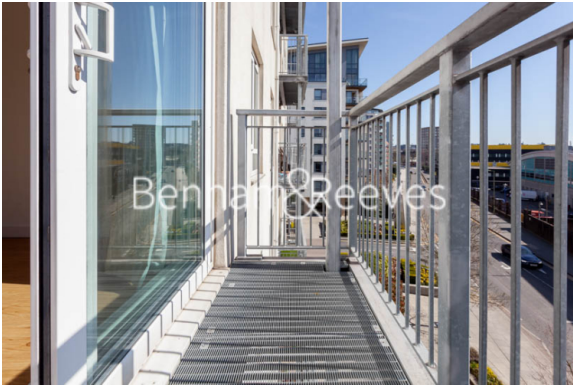
020 8732 7980

Redress & Client Money Protection :

Benham and Reeves are members of The Property Ombudsman redress scheme and have Client Money protection with ARLA Propertymark. You can find more information on our website at <https://www.benhams.com/membership/>



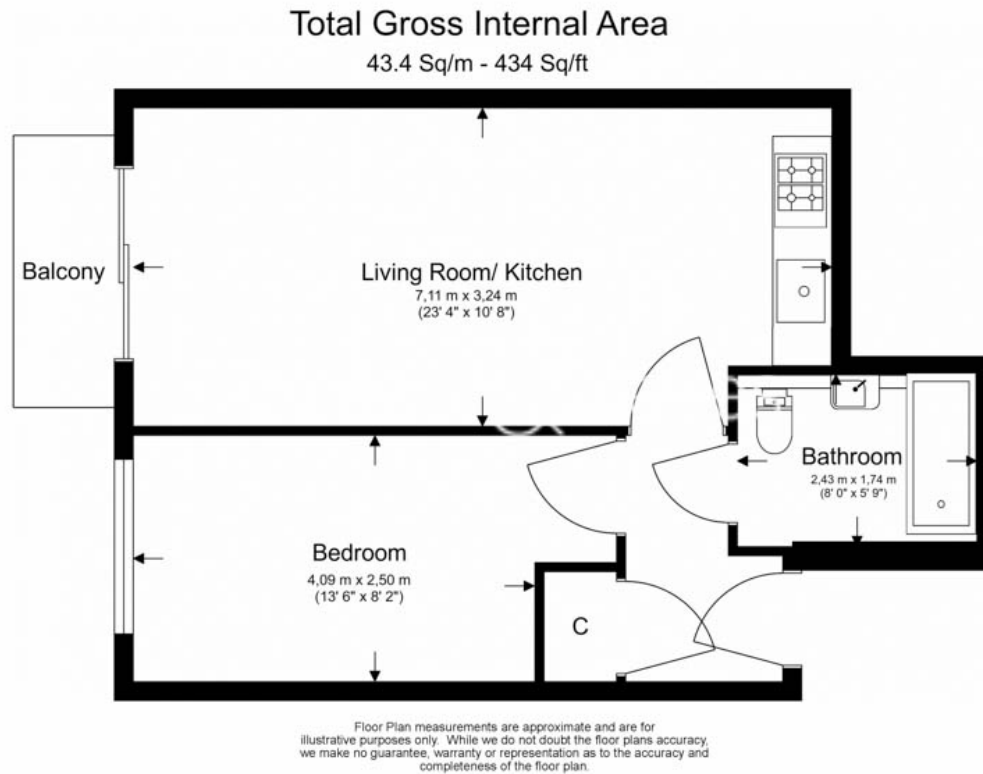
Benham & Reeves



Heritage Avenue, Colindale, NW9

£370 per week, £1,603 per month + fees

www.benhams.com



Energy Efficiency Rating		
	Current	Potential
<i>Very energy efficient - lower running costs</i>		
(92 plus) A		87
(81-91) B		
(69-80) C	74	
(55-68) D		
(39-54) E		
(21-38) F		
(1-20) G		
<i>Not energy efficient - higher running costs</i>		
England & Wales		EU Directive 2002/91/EC

London branches open six days a week Mon - Sat

Canary Wharf | City | Colindale | Dartmouth Park | Ealing | Fulham
Hammersmith | Hampstead | Highgate | Hyde Park | Kensington | Kew
Knightsbridge | Nine Elms | Shoreditch | Southall | Surrey Quays
Wapping | Wembley | White City | Woolwich



International offices

China | Hong Kong SAR | India | Indonesia | Qatar | Malaysia | Middle East | Pakistan
Singapore | South Africa | Thailand | Turkey

Benham & Reeves