



Benham & Reeves

**Britton Apartments, Cock Lane, EC1A**

£750 per week, £3,250 per month + fees

 2 Bedrooms    2 Bathrooms    Furnished

A tastefully 3rd floor presented apartment set in a sought-after Boutique development close to St Paul's, Farringdon, and Fleet Street. The property enjoys a contemporary finish and positions within walking distance to the well-known attractions in the heart of the City of London.

Please [click here](#) for full detail

## Property features

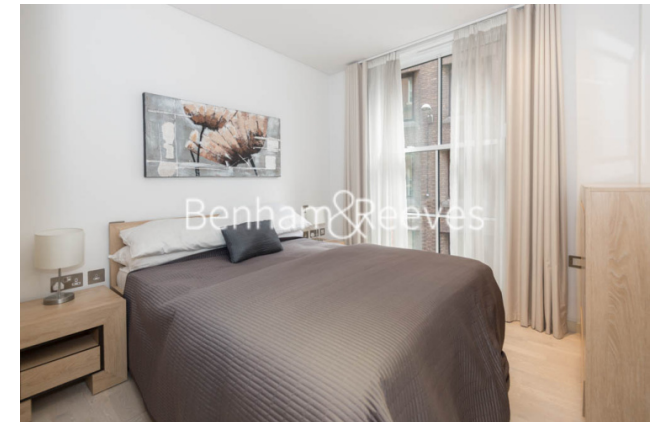
**Two Bedroom Apartment | Two Bathrooms | Open Plan Living Space | Furnished | Fitted Kitchen | EPC-C | Excellent Transport links Nearby | Walking distance from St Pauls, Farringdon and Fleet Street | Secure entrance | Nearby Farringdon Station**

For more information about this property,  
please call our City branch on

**020 7213 9700**

Redress & Client Money Protection :

Benham and Reeves are members of The Property Ombudsman redress scheme and have Client Money protection with ARLA Propertymark. You can find more information on our website at <https://www.benham.com/membership/>



**Benham & Reeves**



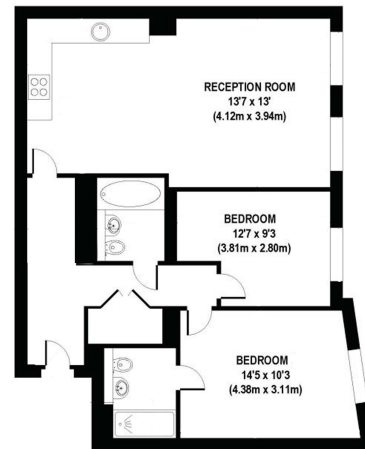
# Britton Apartments, Cock Lane, EC1A

£750 per week, £3,250 per month + fees

www.benhams.com

102CS.EC1A - 1st Floor

Approx gross internal Area: 800sq/ft - 74sq/m



Whilst every attempt has been made to ensure the accuracy of the floor plan contained here, measurements of doors, windows, rooms and any other items are approximate and no responsibility is taken for any error, omission, or mis-statement. This plan is for illustrative purposes only and should be used as such by any prospective purchaser. The services, systems and appliances shown have not been tested and no guarantee as to their operability or efficiency can be given.  
Made with Metropix ©2016

Energy Efficiency Rating		
	Current	Potential
Very energy efficient - lower running costs		
(92 plus) <b>A</b>		
(81-91) <b>B</b>		
(69-80) <b>C</b>	<b>73</b>	<b>74</b>
(55-68) <b>D</b>		
(39-54) <b>E</b>		
(21-38) <b>F</b>		
(1-20) <b>G</b>		
Not energy efficient - higher running costs		
<b>England &amp; Wales</b>	EU Directive 2002/91/EC	

## London branches open six days a week Mon - Sat

Canary Wharf | City | Colindale | Dartmouth Park | Ealing | Fulham  
Hammersmith | Hampstead | Highgate | Hyde Park | Kensington | Kew  
Knightsbridge | Nine Elms | Shoreditch | Southall | Surrey Quays  
Wapping | Wembley | White City | Woolwich

## International offices

China | Hong Kong SAR | India | Indonesia | Israel | Malaysia | Middle East | Pakistan  
Qatar | Singapore | South Africa | Thailand | Turkey



Benham & Reeves