



Benham & Reeves

**One Blackfriars Road, City, SE1**

£1,500 per week, £6,500 per month + fees

 2 Bedrooms    2 Bathrooms    Furnished

Luxury apartment situated within a highly prestigious development on The Southbank. Located within a short walk of The City and easy reach of The West End and Canary Wharf.

Please [click here](#) for full detail

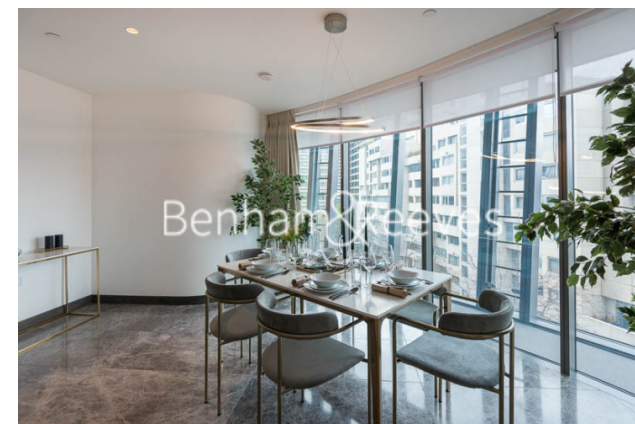
## Property features

**Two Bedroom luxury interior designed apartment | Large bedrooms with feature lighting and integrated storage | Underfloor heating & comfort cooling | Home automation - feature and mood lighting control | Wall mounted Sonos SoundBar system & flat screen TV | EPC-B | Residents pool and spa, gym, cinema and wine tasting room | Executive Lounge on 32nd floor with exceptional views | Sky garden & a dedicated 24h concierge | Moments from the Southbank, short walk to the City**

For more information about this property,  
please call our City branch on

**020 7213 9700**

Redress & Client Money Protection :  
Benham and Reeves are members of The Property Ombudsman redress scheme and have Client Money protection with ARLA Propertymark.  
You can find more information on our website at <https://www.benhams.com/membership/>



Benham & Reeves



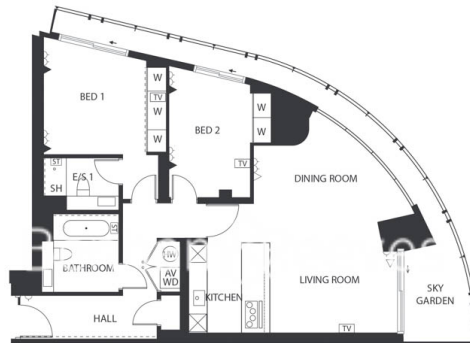
# One Blackfriars Road, City, SE1

£1,500 per week, £6,500 per month + fees

www.benhams.com

## 4th Floor

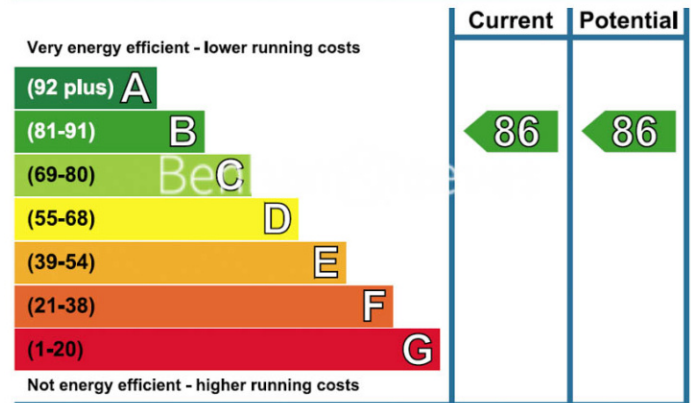
Approx gross internal area: 1174sq/ft - 109sq/m



LIVING/DINING	6.45m x 4.39m	21'2" x 14'4"
KITCHEN	3.25m x 2.97m	10'8" x 9'9"
BEDROOM 1	4.0 m x 3.50m	13'1" x 11'6"
BEDROOM 2	4.49m x 2.82m	14'9" x 9'3"
SKY GARDEN	3.33m x 2.28m	10'10" x 7'6"

Whilst every attempt has been made to ensure the accuracy of the floor plan contained here, measurements of doors, windows, rooms and any other items are approximate and no responsibility is taken for any error, omission, or mis-statement. This plan is for illustrative purposes only and should be used as such by any prospective purchaser. The services, systems and appliances shown have not been tested and no guarantee as to their operability or efficiency can be given.  
Made with Metropix ©2016

## Energy Efficiency Rating



## London branches open six days a week Mon - Sat

Canary Wharf | City | Colindale | Dartmouth Park | Ealing | Fulham  
Hammersmith | Hampstead | Highgate | Hyde Park | Kensington | Kew  
Knightsbridge | Nine Elms | Shoreditch | Southall | Surrey Quays  
Wapping | Wembley | White City | Woolwich

## International offices

China | Hong Kong SAR | India | Indonesia | Qatar | Malaysia | Middle East | Pakistan  
Singapore | South Africa | Thailand | Turkey

