



Benham & Reeves

Water Lane, City, EC3R

£831 per week, £3,600 per month + fees

 1 Bedroom  1 Bathroom  Furnished

Luxury apartment situated within a coveted development close to Tower Bridge, the City of London, Tower Hill (Circle and District Line), Tower Gateway (DLR) and Monument (Northern, Circle & District line).

Please [click here](#) for full detail

Property features

One Bedroom | Bespoke Bathroom | High Quality Finish Throughout | Fitted Kitchen with High End Appliances | Furnished | EPC-B | 24 Hour Concierge, Gym, Pool, Cinema | Private Balcony | Nearby Tower Hill and Monument Tube Stations

For more information about this property, please call our City branch on

020 7213 9700

Redress & Client Money Protection :

Benham and Reeves are members of The Property Ombudsman redress scheme and have Client Money protection with ARLA Propertymark. You can find more information on our website at <https://www.benhams.com/membership/>



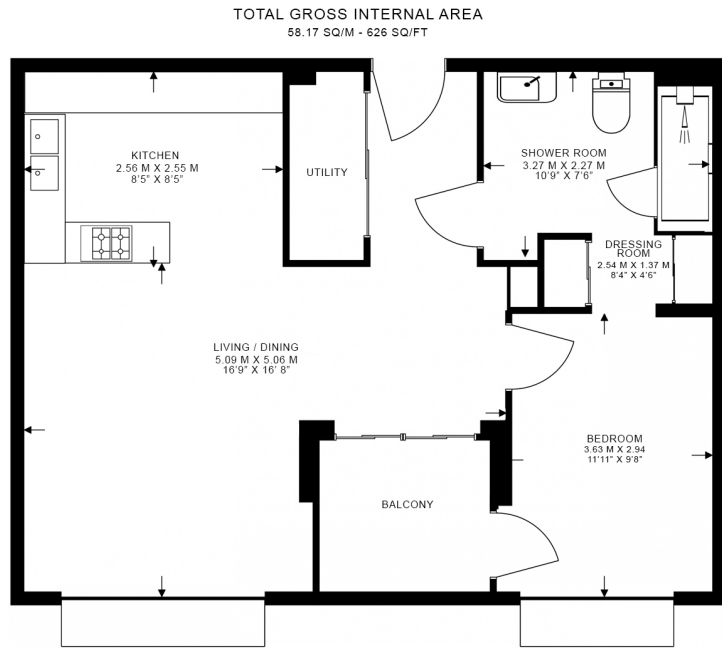
Benham&Reeves



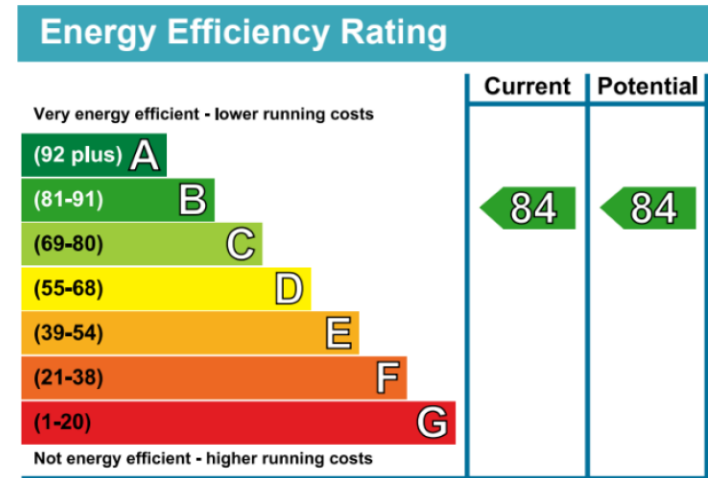
Water Lane, City, EC3R

£831 per week, £3,600 per month + fees

www.benhams.com



Floor Plan measurements are approximate and are for illustrative purposes only. While we do not doubt the floor plans accuracy, we make no guarantee, warranty or representation as to the accuracy and completeness of the floor plan.



London branches open six days a week Mon - Sat

Canary Wharf | City | Colindale | Dartmouth Park | Ealing | Fulham
Hammersmith | Hampstead | Highgate | Hyde Park | Kensington | Kew
Knightsbridge | Nine Elms | Shoreditch | Southall | Surrey Quays
Wapping | Wembley | White City | Woolwich

International offices

China | Hong Kong SAR | India | Indonesia | Qatar | Malaysia | Middle East | Pakistan
Singapore | South Africa | Thailand | Turkey

