



Benham & Reeves

Wormwood Street, City, EC2M

£462 per week, £2,002 per month + fees

 1 Bedroom  1 Bathroom  Furnished

Well-presented, modern apartment set within a period building on the Eastern edge of the City. Minutes from Liverpool Staton.

Please [click here](#) for full detail

Property features

Modern One Bedroom Apartment | Family Size Bathroom | Open Plan Reception | Fully Equipped Kitchen | Furnished | EPC-D | Excellent Transport Links | Fitted Wardrobe Space | Liverpool Street Station nearby

For more information about this property,
please call our City branch on

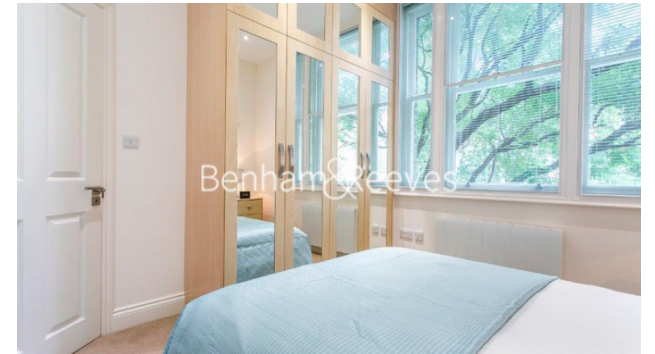
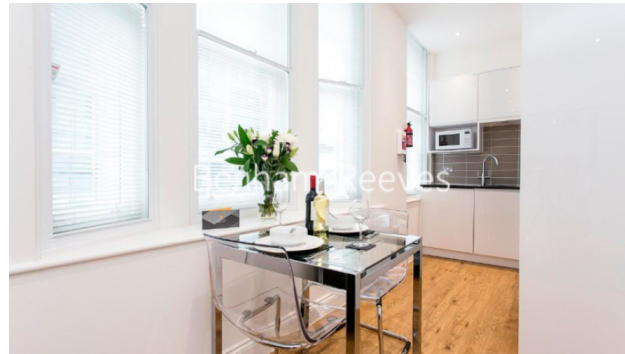
020 7213 9700



Redress & Client Money Protection :

Benham and Reeves are members of The Property Ombudsman redress scheme and have Client Money protection with ARLA Propertymark. You can find more information on our website at <https://www.benham.com/membership/>

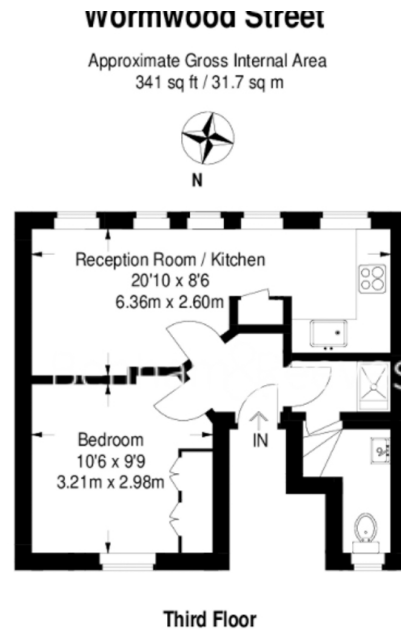
Benham & Reeves



Wormwood Street, City, EC2M

£462 per week, £2,002 per month + fees

www.benhams.com



Not to scale, for guidance only and must not be relied upon as a statement of fact. All measurements and areas are approximate only and have been prepared in accordance with the current edition of the RICS Code of Measuring Practice.

Score	Energy rating	Current	Potential
92+	A		
81-91	B		
69-80	C		
55-68	D	66 D	66 D
39-54	E		
21-38	F		
1-20	G		

London branches open six days a week Mon - Sat

Canary Wharf | City | Colindale | Dartmouth Park | Ealing | Fulham
Hammersmith | Hampstead | Highgate | Hyde Park | Kensington | Kew
Knightsbridge | Nine Elms | Shoreditch | Southall | Surrey Quays
Wapping | Wembley | White City | Woolwich

International offices

China | Hong Kong SAR | India | Indonesia | Qatar | Malaysia | Middle East | Pakistan
Singapore | South Africa | Thailand | Turkey

