



Benham & Reeves

Principal Tower, City, EC2A

£808 per week, £3,500 per month + fees

 1 Bedroom  1 Bathroom  Furnished

Luxurious 19th floor apartment situated in one of London's most iconic residential development a brief walk from Shoreditch High Street Station.

Please [click here](#) for full detail

Property features

19th Floor one bedroom apartment | Bespoke bathroom | Open Plan Reception | Fitted Kitchen | Furnished | EPC-B | Dedicated 24-hour Concierge, swimming pool, sauna, spa, gym | Excellent Transport links Nearby | Fantastic views | Walking distance from Shoreditch

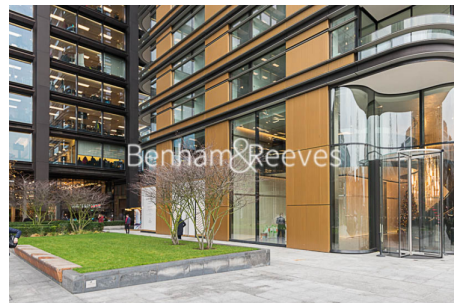
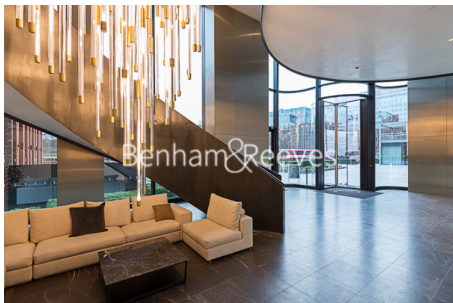
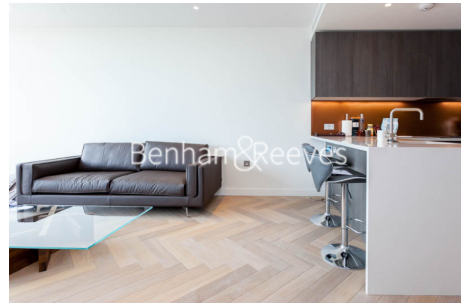
For more information about this property,
please call our City branch on

020 7213 9700



Redress & Client Money Protection :
Benham and Reeves are members of The Property Ombudsman redress scheme and have Client Money protection with ARLA Propertymark.
You can find more information on our website at <https://www.benhamandreeves.com/membership/>

Benham & Reeves

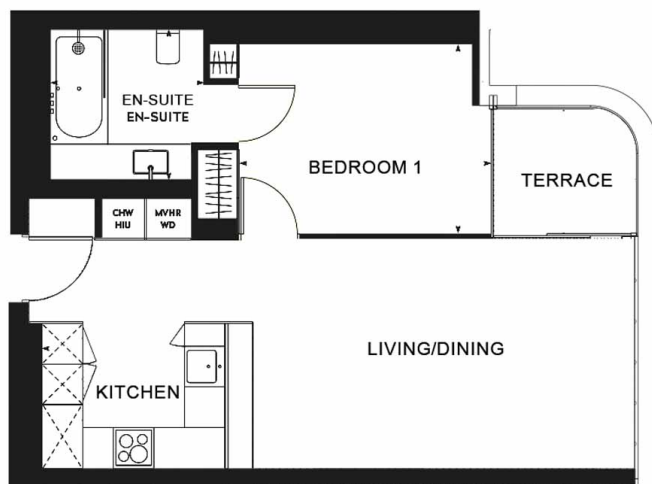


Principal Tower, City, EC2A

£808 per week, £3,500 per month + fees

www.benhams.com

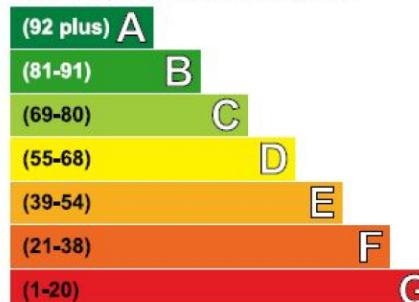
19th Floor
Total Gross Internal Area
51.2 Sq/m - 551 Sq/ft



Floor Plan measurements are approximate and are for illustrative purposes only. While we do not doubt the floor plans accuracy, we make no guarantee, warranty or representation as to the accuracy and completeness of the floor plan.

Energy Efficiency Rating

Very energy efficient - lower running costs



Current	Potential
84	84

Not energy efficient - higher running costs

London branches open six days a week Mon - Sat

Canary Wharf | City | Colindale | Dartmouth Park | Ealing | Fulham
Hammersmith | Hampstead | Highgate | Hyde Park | Kensington | Kew
Knightsbridge | Nine Elms | Shoreditch | Southall | Surrey Quays
Wapping | Wembley | White City | Woolwich

International offices

China | Hong Kong SAR | India | Indonesia | Qatar | Malaysia | Middle East | Pakistan
Singapore | South Africa | Thailand | Turkey



Benham & Reeves