



Benham & Reeves

Pelham Court, Chelsea, SW3

£1,100 per week, £4,767 per month + fees

 2 Bedrooms  2 Bathrooms 
Furnished/UnFurnished

A smartly-presented 845 sq ft TWO-BEDROOM apartment in the highly desirable Pelham Court - an Edwardian building on Fulham Road, in the heart of CHELSEA where residents benefit from daytime porter, lift services and a beautiful private communal garden.

Please [click here](#) for full detail

Property features

2 Bedrooms | 2 Bathrooms | Reception | Furn/Unfurn | Fitted Kitchen | EPC-D | Porter, Lift, 24 Hour Emergency Helpline & Service | Communal Gardens | Nearby South Kensington Tube Station

For more information about this property, please call our Knightsbridge branch on

020 7581 2112



Redress & Client Money Protection :

Benham and Reeves are members of The Property Ombudsman redress scheme and have Client Money protection with ARLA Propertymark. You can find more information on our website at <https://www.benhams.com/membership/>

Benham & Reeves



Pelham Court, Chelsea, SW3

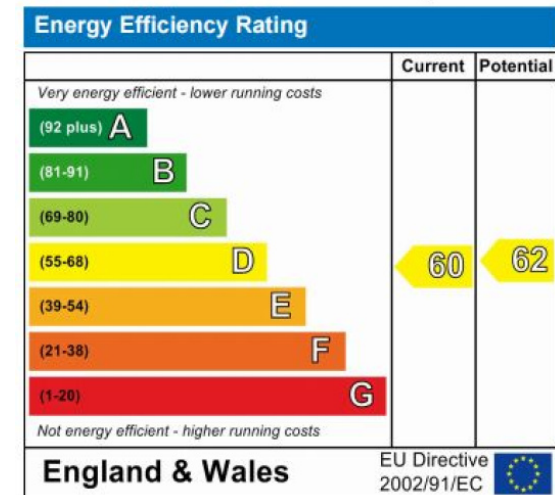
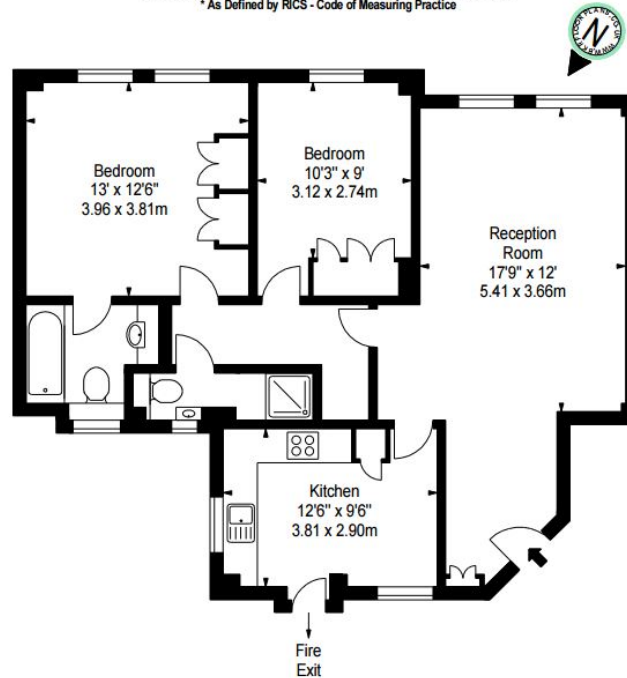
£1,100 per week, £4,767 per month + fees

www.benhams.com

28 PELHAM COURT, SW3

APPROX. GROSS INTERNAL AREA *
845 Ft² - 78.50 M²

ILLUSTRATION FOR IDENTIFICATION PURPOSES ONLY. NOT TO SCALE
* As Defined by RICS - Code of Measuring Practice



London branches open six days a week Mon - Sat

Canary Wharf | City | Colindale | Dartmouth Park | Ealing | Fulham
Hammersmith | Hampstead | Highgate | Hyde Park | Kensington | Kew
Knightsbridge | Nine Elms | Shoreditch | Southall | Surrey Quays
Wapping | Wembley | White City | Woolwich

International offices

China | Hong Kong SAR | India | Indonesia | Qatar | Malaysia | Middle East | Pakistan
Singapore | South Africa | Thailand | Turkey

