



Benham & Reeves

**Draycott Place, Chelsea, SW3**

£495 per week, £2,145 per month + fees

 Studio  1 Bathroom  Furnished

A charming & spacious 369 sq ft top floor STUDIO apartment situated within a gorgeous building on DRAYCOTT PLACE in KNIGHTSBRIDGE, less than two minutes from The King' Road & Sloane Square.

Residents benefit from a lift, prestigious location and close proximity to a wonderful array of shops, restaurants & bars. Sloane Square Station is 3 minutes.

Please [click here](#) for full detail

## Property features

**Studio | Bathroom | Separate Kitchen | Top Floor | 369 sq ft | EPC-C | Furnished | Lift | Prestigious Knightsbridge location | Nearby Sloane Square Tube Station**

For more information about this property, please call our Knightsbridge branch on

**020 7581 2112**

Redress & Client Money Protection :

Benham and Reeves are members of The Property Ombudsman redress scheme and have Client Money protection with ARLA Propertymark. You can find more information on our website at <https://www.benhams.com/membership/>



Benham & Reeves

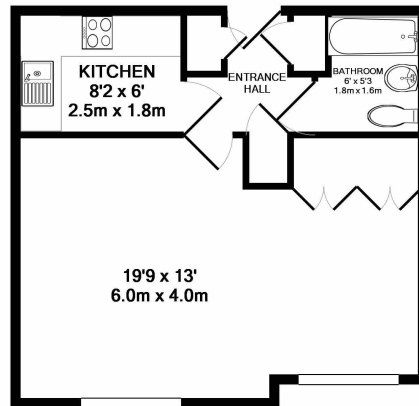





# Draycott Place, Chelsea, SW3

£495 per week, £2,145 per month + fees

www.benhams.com



8DP.SW3 - 3RD FLOOR  
 TOTAL APPROX. FLOOR AREA 369 SQ.FT. (34.3 SQ.M.)  
 Whilst every attempt has been made to ensure the accuracy of the floor plan contained here, measurements of doors, windows, rooms and any other items are approximate and no responsibility is taken for any error, omission, or mis-statement. This plan is for illustrative purposes only and should be used as such by any prospective purchaser. The services, systems and appliances shown have not been tested and no guarantee as to their operability or efficiency can be given  
 Made with Metropix ©2017

Energy Efficiency Rating		
	Current	Potential
<i>Very energy efficient - lower running costs</i>		
(92 plus) <b>A</b>		
(81-91) <b>B</b>		
(69-80) <b>C</b>	71	74
(55-68) <b>D</b>		
(39-54) <b>E</b>		
(21-38) <b>F</b>		
(1-20) <b>G</b>		
<i>Not energy efficient - higher running costs</i>		
<b>England &amp; Wales</b>	EU Directive 2002/91/EC 	

## London branches open six days a week Mon - Sat

Canary Wharf | City | Colindale | Dartmouth Park | Ealing | Fulham  
 Hammersmith | Hampstead | Highgate | Hyde Park | Kensington | Kew  
 Knightsbridge | Nine Elms | Shoreditch | Southall | Surrey Quays  
 Wapping | Wembley | White City | Woolwich

## International offices

China | Hong Kong SAR | India | Indonesia | Qatar | Malaysia | Middle East | Pakistan  
 Singapore | South Africa | Thailand | Turkey



Benham & Reeves