



Benham & Reeves

Crown Lodge, Chelsea, SW3

£825 per week, £3,575 per month + fees

 2 Bedrooms  2 Bathrooms  Part-furnished

A well-presented 840 sq ft TWO-BEDROOM apartment in the highly desirable CROWN LODGE development in CHELSEA. Residents benefit from 24 Hr CONCIERGE, stunning GARDENS with Fish Ponds, SWIMMING POOL & FITNESS SUITE. Underground PARKING SPACE included.

Please [click here](#) for full detail

Property features

2 Bedrooms | 2 Bathrooms | 24 Hr Concierge | Swimming Pool | Parking Included | EPC-C | Secure Parking Space | 10 Minutes to Harrods | Nearby the King's Road | South Kensington Underground Station

For more information about this property,
please call our Knightsbridge branch on

020 7581 2112

Redress & Client Money Protection :

Benham and Reeves are members of The Property Ombudsman redress scheme and have Client Money protection with ARLA Propertymark. You can find more information on our website at <https://www.benhams.com/membership/>



Benham & Reeves



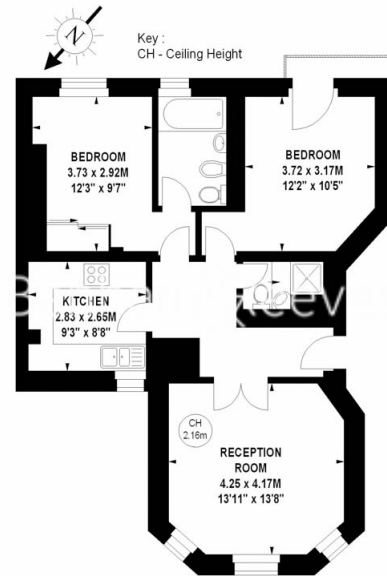
Crown Lodge, Chelsea, SW3

£825 per week, £3,575 per month + fees

www.benhams.com

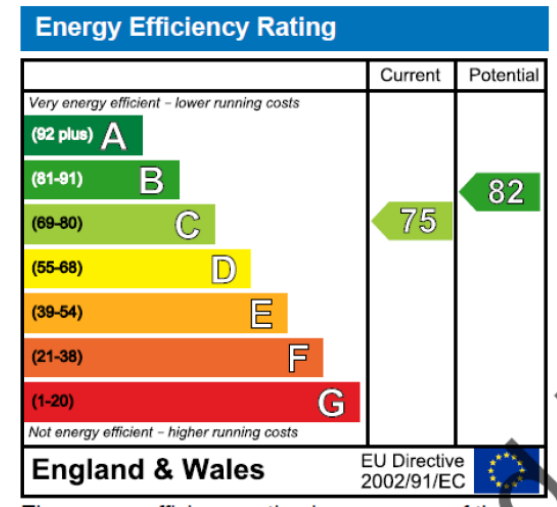
Crown Lodge, SW3

Approximate gross internal area
78 sq. m. / 840 sq. ft.



Second Floor

Illustration For Identification Purposes Only. Not To Scale



London branches open six days a week Mon - Sat

Canary Wharf | City | Colindale | Dartmouth Park | Ealing | Fulham
Hammersmith | Hampstead | Highgate | Hyde Park | Kensington | Kew
Knightsbridge | Nine Elms | Shoreditch | Southall | Surrey Quays
Wapping | Wembley | White City | Woolwich

International offices

China | Hong Kong SAR | India | Indonesia | Qatar | Malaysia | Middle East | Pakistan
Singapore | South Africa | Thailand | Turkey

