



Benham & Reeves

**Harbour Avenue, Chelsea, SW10**

£700 per week, £3,033 per month + fees

 1 Bedroom    1 Bathroom    Furnished

A stylish first floor apartment situated in a boutique development with views down Chelsea Creek towards the River and the City. A 2-minute walk (0.1 miles) from Imperial Wharf Station.

Please [click here](#) for full detail

## Property features

**1 Bedroom | 1 Reception Room | 1 Bathroom | Lift | 3rd floor | EPC-B | Balcony | Communal Garden | Concierge, Gym, New Build | Railway services can also be accessed from this station**

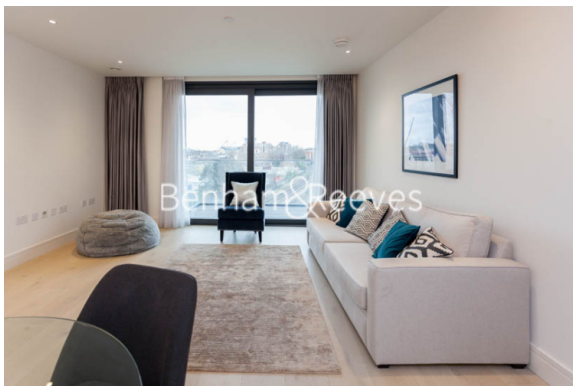
For more information about this property,  
please call our Fulham branch on

**020 7348 7620**



Redress & Client Money Protection :  
Benham and Reeves are members of The Property Ombudsman redress scheme and have Client Money protection with ARLA Propertymark.  
You can find more information on our website at <https://www.benhams.com/membership/>

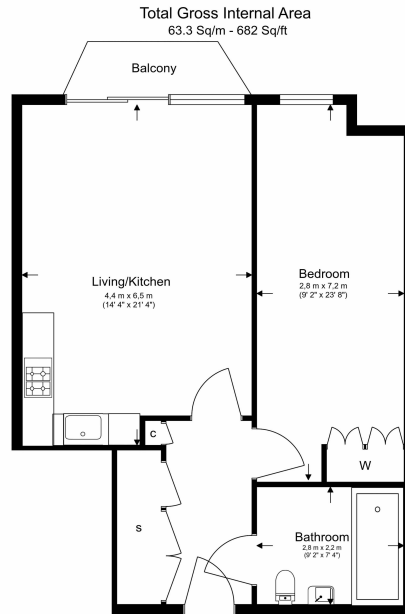
Benham & Reeves



# Harbour Avenue, Chelsea, SW10

£700 per week, £3,033 per month + fees

www.benhams.com



Floor Plan measurements are approximate and are for illustrative purposes only. While we do not doubt the floor plans accuracy, we make no guarantee, warranty or representation as to the accuracy and completeness of the floor plan.

Score	Energy rating	Current	Potential
92+	A		
81-91	B	85   B	85   B
69-80	C		
55-68	D		
39-54	E		
21-38	F		
1-20	G		

## London branches open six days a week Mon - Sat

Canary Wharf | City | Colindale | Dartmouth Park | Ealing | Fulham  
Hammersmith | Hampstead | Highgate | Hyde Park | Kensington | Kew  
Knightsbridge | Nine Elms | Shoreditch | Southall | Surrey Quays  
Wapping | Wembley | White City | Woolwich

## International offices

China | Hong Kong SAR | India | Indonesia | Israel | Malaysia | Middle East | Pakistan  
Qatar | Singapore | South Africa | Thailand | Turkey

