



Benham & Reeves

Lighterman Tower, Chelsea Island, Chelsea, SW10

£1,845 per week, £7,995 per month + fees

 3 Bedrooms  2 Bathrooms  Furnished

A bright 3 bed, 2 bath apartment on the fifth floor of Lighterman Towers. The property benefits from large floor to ceiling windows and great views from the living room and balcony. Modern and contemporary features are the highlight of this newly built apartment alongside state of the art facilities.

Please [click here](#) for full detail

Property features

3 bedroom | 2 bathroom | Modern finishes throughout | Furnished | Large living room | EPC- B | State of the art appliances | Balcony - River views | Spacious bedrooms | Nearby Imperial Wharf Station

For more information about this property, please call our Fulham branch on

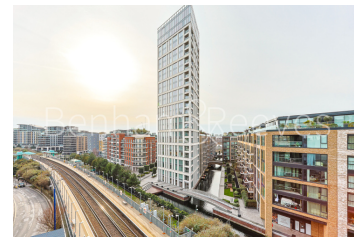
020 7348 7620

Redress & Client Money Protection :

Benham and Reeves are members of The Property Ombudsman redress scheme and have Client Money protection with ARLA Propertymark. You can find more information on our website at <https://www.benhams.com/membership/>



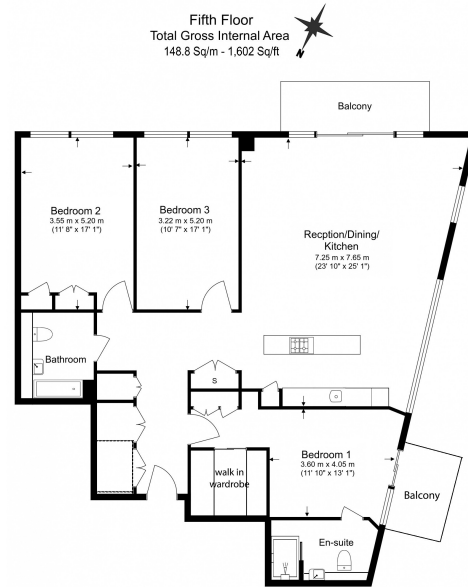
Benham & Reeves



Lighterman Tower, Chelsea Island, Chelsea, SW10

www.benhams.com

£1,845 per week, £7,995 per month + fees



Benham & Reeves
Floor Plan measurements are approximate and are for illustrative purposes only. While we do not doubt the floor plans accuracy, we make no guarantee, warranty or representation as to the accuracy and completeness of the floor plan.

Score	Energy rating	Current	Potential
92+	A		
81-91	B	89 B	89 B
69-80	C		
55-68	D		
39-54	E		
21-38	F		
1-20	G		

London branches open six days a week Mon - Sat

Canary Wharf | City | Colindale | Dartmouth Park | Ealing | Fulham
Hammersmith | Hampstead | Highgate | Hyde Park | Kensington | Kew
Knightsbridge | Nine Elms | Shoreditch | Southall | Surrey Quays
Wapping | Wembley | White City | Woolwich



International offices

China | Hong Kong SAR | India | Indonesia | Qatar | Malaysia | Middle East | Pakistan
Singapore | South Africa | Thailand | Turkey

Benham & Reeves