



Benham & Reeves

Westbourne Apartments, Central Avenue, SW6

£675 per week, £2,925 per month + fees

 1 Bedroom  2 Bathrooms  Furnished

River views! A stunning large apartment situated in a popular development located along the River Thames. Imperial Wharf Overground station with excellent travel links around London, is within walking distance.

Please [click here](#) for full detail

Property features

1 Double Bedrooms (8th Floor with Lift) | Large Reception with Dining Area | Fully Fitted Open-Plan Kitchen with well know Appliances | 2 Luxury Bathrooms | 24/7 concierge | EPC-B | Residents Gym Included | High quality furniture | River views | Short Walk to Imperial Wharf Station and Bus Routes

For more information about this property,
please call our Fulham branch on

020 7348 7620

Redress & Client Money Protection :

Benham and Reeves are members of The Property Ombudsman redress scheme and have Client Money protection with ARLA Propertymark. You can find more information on our website at <https://www.benhams.com/membership/>



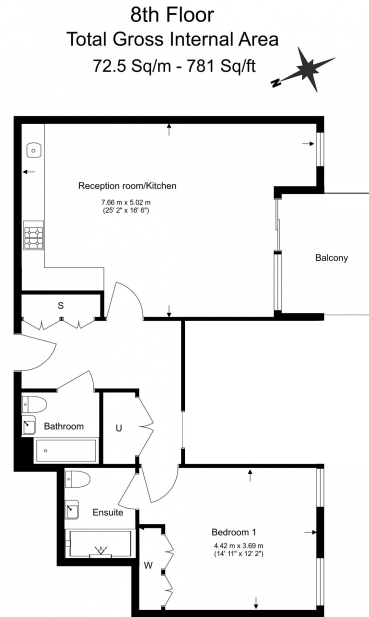
Benham & Reeves



Westbourne Apartments, Central Avenue, SW6

£675 per week, £2,925 per month + fees

www.benhams.com



Floor Plan measurements are approximate and are for illustrative purposes only. While we do not doubt the floor plans accuracy, we make no guarantee, warranty or representation as to the accuracy and completeness of the floor plan.

Score	Energy rating	Current	Potential
92+	A		
81-91	B	83 B	84 B
69-80	C		
55-68	D		
39-54	E		
21-38	F		
1-20	G		

London branches open six days a week Mon - Sat

Canary Wharf | City | Colindale | Dartmouth Park | Ealing | Fulham
Hammersmith | Hampstead | Highgate | Hyde Park | Kensington | Kew
Knightsbridge | Nine Elms | Shoreditch | Southall | Surrey Quays
Wapping | Wembley | White City | Woolwich



International offices

China | Hong Kong SAR | India | Indonesia | Israel | Malaysia | Middle East | Pakistan
Qatar | Singapore | South Africa | Thailand | Turkey

Benham & Reeves