



Benham & Reeves

## Thames City, Carnation Way, SW8

£1,500 per week, £6,500 per month + fees

 3 Bedrooms    2 Bathrooms    Furnished

A bright three bedroom., two-bathroom apartment in the 5\* One Thames City development.

Please [click here](#) for full detail

## Property features

**Three double bedrooms | Two bathrooms | Air cooling | Repainted | 5\* facilities | EPC-B | 24-hour concierge | Swimming Pool | Gym | Vauxhall Station**

For more information about this property,  
please call our Nine Elms branch on

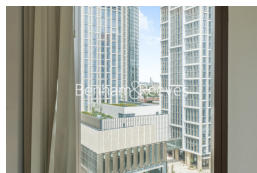
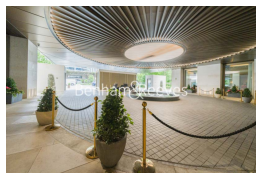
**020 3282 3700**

Redress & Client Money Protection :

Benham and Reeves are members of The Property Ombudsman redress scheme and have Client Money protection with ARLA Propertymark. You can find more information on our website at <https://www.benhams.com/membership/>



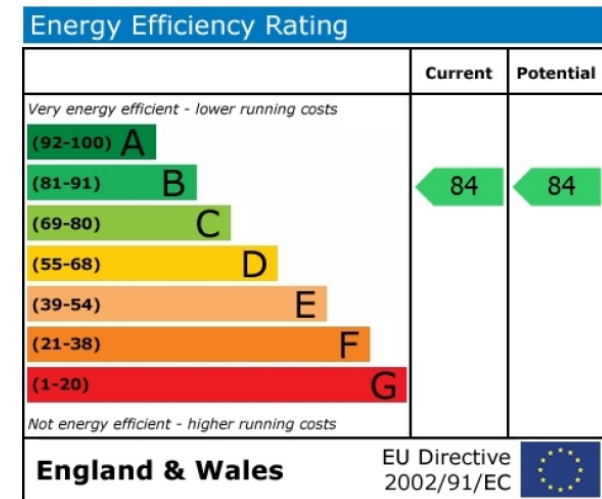
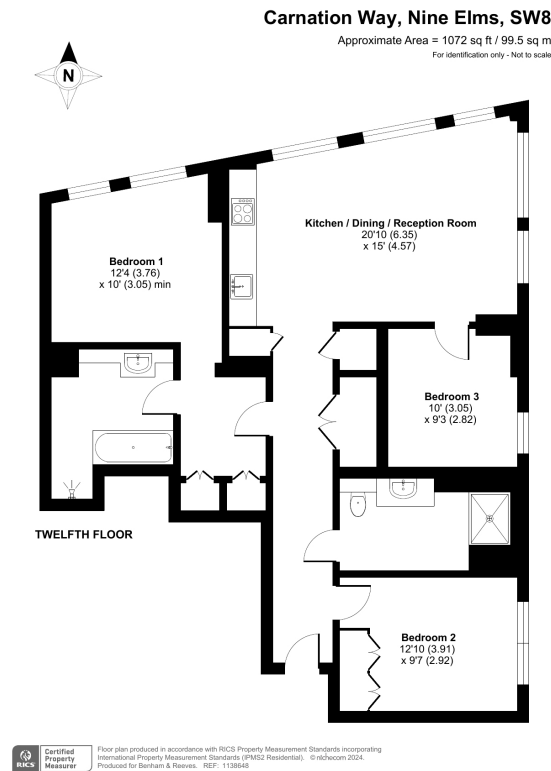
**Benham & Reeves**



# Thames City, Carnation Way, SW8

£1,500 per week, £6,500 per month + fees

www.benhams.com



## London branches open six days a week Mon - Sat

Canary Wharf | City | Colindale | Dartmouth Park | Ealing | Fulham  
Hammersmith | Hampstead | Highgate | Hyde Park | Kensington | Kew  
Knightsbridge | Nine Elms | Shoreditch | Southall | Surrey Quays  
Wapping | Wembley | White City | Woolwich

## International offices

China | Hong Kong SAR | India | Indonesia | Qatar | Malaysia | Middle East | Pakistan  
Singapore | South Africa | Thailand | Turkey



Benham & Reeves